



GUTHRIE
THEATER

2023-2024 Annual Report

Fiscal Year September 1, 2023 - August 31, 2024



Inside



INTRODUCTION

A Letter From Our Leaders • 3

SEASON IN REVIEW

Season at a Glance • 4

A Monumental Season of Milestones • 5

2023-2024 SEASON

Mainstage Programming • 14

FINANCIALS

Operating Fund and Statement of Financial Position • 16

SUPPORTERS

Corporate, Foundation and Public Support • 17

Annual Fund Contributors • 18

WHO WE ARE

Guthrie Staff • 24



818 South 2nd Street, Minneapolis, MN 55415
ADMINISTRATION 612.225.6000
BOX OFFICE 612.377.2224 or 1.877.447.8243 (toll-free)
guthrietheater.org • Joseph Haj, Artistic Director

The Guthrie Theater would like to acknowledge that we gather on the traditional land of the Dakota People and honor with gratitude the land itself and the people who have stewarded it throughout the generations, including the Ojibwe and other Indigenous nations.

Guthrie Theater Annual Report

Fiscal Year 2023-2024 (FY24)
Published May 2025

EDITORS Johanna Buch, Christine Stevens
GRAPHIC DESIGNER Brian Bressler

CONTRIBUTORS Janet E. Balej, Joseph Haj, Trisha Kirk,
Jennifer Reedstrom Bishop

Tax ID: 41-0854160



A Letter From Our Leaders

Thanks to generous support from our community and the steady dedication of our staff and board of directors, the Guthrie Theater's vibrant 2023–2024 Season was one of the most ambitious in the theater's history. Together, we achieved notable artistic milestones while working tirelessly to stabilize the financial health of the organization. In the face of every challenge, we remained firmly rooted in our mission and core values, embraced new opportunities and learned what we're capable of when we work together.

Onstage, our artistic highlights included the world premiere of *For the People* – the first Guthrie mainstage production written by, for and about Native people. We engaged in a collaborative and illuminating creative process with dozens of Native partners, and at the end of the run, *For the People* was recognized by Lieutenant Governor Peggy Flanagan as a vital contribution to the culture and legacy of Minnesota. The Guthrie also made a thrilling return to rotating repertory with Shakespeare's History Plays (*Richard II*, *Henry IV* and *Henry V*). Years in the making, this theatrical feat drew theatergoers from across the country, including nearly 2,000 patrons who experienced all three plays in one day. Offstage, we continued to offer community engagement, education and professional training programs to deepen our connection with the community and inspire future generations of theatergoers and artists.

Throughout the season, the Guthrie's staff and board diligently focused on our core value of Fiscal Responsibility, striving to reduce operational expenses, minimize risk and prioritize the theater's financial health while maintaining exceptional theater onstage. After months of dedicated work, we are pleased to report that we reduced our \$3.8 million deficit from FY23 to \$85,578 at the end of FY24. While this progress is encouraging, we know there is still work to do both now and in the future to return to and maintain a balanced budget.

When we consider the Guthrie's future, we remain optimistic and inspired by our exceptional community. You reminded us how much the Guthrie means to you by giving generously, engaging with us throughout the 2023–2024 Season and helping us exceed our ticket revenue goal. Thank you for your continued support and belief in the power of theater to ignite the imagination, stir the heart, open the mind and bring us together.

Yours in service,

Joseph Haj
Artistic Director

Jennifer Reedstrom Bishop
Chair, Guthrie Board of Directors

Board of Directors

Chair

Jennifer Reedstrom Bishop

Vice Chair

ReBecca Koenig Roloff

Director

Joseph Haj

Treasurer

David Dines

Secretary

David Moore, Jr.

Directors

- | | |
|-------------------------|-------------------------|
| Susan W. Allen | Renee Montz |
| Martha Goldberg Aronson | Lynn Myhran |
| Y. Marc Belton | Wendy Nelson |
| Michael J. Blum | Anne Paape |
| Peter Brew | Brian Pietsch |
| Priscilla Brewster | Ann Rainhart |
| James L. Chosy | Benjamin Reinhardt |
| Amy Fiterman | Jerry Rudowsky |
| Diane Hofstede | Lee Skold |
| Hans Kabat | Kenneth F. Spence |
| Jay Kiedrowski | Laura Delaney Taft |
| John A. Knapp | Kweli P. Thompson |
| Ryan J. Long | Meredith Boone Tutterow |
| Audrey Lucas | John Walthour |
| Tim Manning | Steven C. Webster |
| W. Thomas McEnery | Justin P. Weinberg |
| Munir Meghjee | Jamie Wilson |
| Jennifer Melin Miller | Todd Zaun |

Lifetime Directors

- | | |
|----------------|----------------------|
| Martha Atwater | Stephen W. Sanger |
| Karen Bachman | Douglas M. Steenland |
| David C. Cox | Irving Weiser |
| William George | Margaret Wurtele |
| Polly Grose | Charles A. Zelle |

AS OF APRIL 9, 2025

Season at a Glance

PERFORMANCES AND ATTENDANCE



307,986 patrons from 50 states and 87 Minnesota counties joined us this season

600+ talented artists and staff brought our season to life

18,575 patrons saw the world premiere of *For the People* – the first Guthrie mainstage production written by Native playwrights about Native people

THE HISTORY PLAYS

For the first time in **34** years, Shakespeare's History Plays (*Richard II*, *Henry IV* and *Henry V*) were performed at the Guthrie in rotating repertory



16,067 patrons joined us for one History Play

7,585 patrons saw multiple History Plays

1,954 patrons attended a marathon day

EDUCATION



13,997 students attended a student matinee

223 students participated in summer camps, with 30% receiving scholarships

12 Minnesota actors participated in the Guthrie Actors Lab, a three-week intensive for mid-career artists based in the Twin Cities

COMMUNITY ENGAGEMENT

Hosted **100+** community engagement events, including post-play discussions, BIPOC Community Nights, LGBTQIA+ events and more



338 tickets to *For the People* were issued at no cost to Native elders



2,000 community members attended our Native Pop-Up Markets, which featured 12 Native artists

BEHIND THE SCENES

200 volunteers served more than 1,000 hours at the Guthrie

40+ Native partners, artists, businesses and organizations collaborated with us during *For the People*

315 props, including 36 pieces of furniture, were used in *A Christmas Carol*

126 costumes were featured onstage during the History Plays

4 different puppets were created to portray Audrey II in *Little Shop of Horrors*



A Monumental Season of Milestones

From groundbreaking new work to beloved classics to inaugural training programs, our extraordinary 2023–2024 Season offered something for everyone in our community, both on and off the stage. Notable milestones included the world premiere of *For the People*, the launch of our Theater in Focus program for educators and the epic return of rotating repertory with Shakespeare’s History Plays (*Richard II*, *Henry IV* and *Henry V*). These are just a few examples of how the Guthrie made history this season — and we’re so glad we experienced each vibrant moment with you.



Dial M for Murder



For the People

This Guthrie-commissioned work by Ty Defoe (Citizen of Anishinaabe and Oneida Nations) and Larissa FastHorse (Sicangu Lakota Nation) marked a groundbreaking first: *For the People* was the first mainstage production to be written by Native playwrights about Native people. Over 40 Native artists, partners and organizations collaborated with us in an intentionally Indigenized production process. By the end of the run, 18,575 patrons saw the insightful new comedy, with 3,156 elders and members of the Native community attending at no cost. During closing weekend, Lieutenant Governor Peggy Flanagan delivered a proclamation that declared November 12, 2023, as For the People Day in Minnesota.



Richard II



Henry IV



Henry V

The History Plays

Over three decades ago, the Guthrie opened its 1990-1991 Season with a production of the History Plays that featured Artistic Director Joseph Haj, plus other familiar faces, in the acting company. Revisiting this epic three-play event in rotating repertory was a thrilling theatrical feat that required collaboration across the organization, and everyone rose to the occasion. Patrons from 47 states and multiple countries purchased tickets to at least one performance of the History Plays, and we hosted two marathon days where 1,954 enthusiastic patrons saw all three plays in one day.



A Shakespeare Symposium

In April, more than 100 Shakespeare enthusiasts spent an immersive weekend at the Guthrie for A Shakespeare Symposium, presented in partnership with the Department of English at the University of Minnesota. Artists, educators and Shakespeare fans were invited to see all three History Plays and explore how the leadership and power dynamics portrayed onstage play out in our world today. The action-packed event included Shakespeare trivia, a keynote speaker, breakout sessions, a How'd They Do That? Workshop and a celebratory toast to close out the weekend.



Community Engagement

Throughout the season, the Guthrie facilitated numerous events and initiatives with a growing group of community partners to help patrons and guests engage more deeply with the art onstage. A few highlights were the Queer Reading Room on Level Five during the run of *Dial M for Murder*, Detroit Night during *Skeleton Crew* to celebrate the city that inspired the play, and BIPOC Community Nights during *Little Shop of Horrors* and *English*. We also continued to host local artisans at a variety of pop-up markets in our spaces, including the Native Pop-Up Market during *For the People* that featured handcrafted goods by 12 Native artists.



History Plays Stage Manager Tree O'Halloran

Theater in Focus: *Hamlet*

Last season, we filmed our 60th anniversary production of *Hamlet* directed by Joseph Haj and used it to launch Theater in Focus this season. Offered free to educators, this exciting new program pairs a filmed live performance of a Guthrie production with a robust curriculum designed to amplify academic subjects by exploring the context, characters and themes of a play. This season, we filmed a performance of *Henry V* and developed an accompanying curriculum that will be available to educators in 2025.



Guthrie Actors Lab

Twelve local actors were invited to participate in the inaugural cohort of Guthrie Actors Lab, a free, three-week training intensive for early and mid-career artists based in the Twin Cities that launched May 6–24, 2024. Under the guidance of faculty instructors, the actors explored their craft through workshops in a variety of theater practices, ultimately showcasing their work for an invited audience in the Dowling Studio. We look forward to continuing this program in the future as a resource for local artists to deepen their practice and expand their professional network.



Little Shop of Horrors



Vine & Dine

To celebrate Opening Night of *Little Shop of Horrors* and raise funds for the Guthrie, we hosted Vine & Dine — an evening of merriment and noncarnivorous plants inspired by the iconic musical. The evening offered a variety of ways for attendees to give and engage before the evening performance, including a silent auction, botanical photo booth, pre-show happy hour on the Endless Bridge, and pre-show dinner and speaking program in the Dowling Studio hosted by Artistic Director Joseph Haj and Board Chair Jennifer Reedstrom Bishop. We are grateful to everyone who joined us and gave so generously to the Guthrie.



Summer Camps

Guthrie summer camps offer a fun, collaborative way for kids and teens to work alongside professional theater artists while building their confidence and creativity. This summer, 223 students engaged in play creation, technical theater production, musical theater workshops and more, with 30% receiving scholarships. We love welcoming students to our building every summer and the boost of energy they bring to our spaces. It is a joy to create experiences that inspire positive self-development and community leadership in students while connecting them to the artistry and creative process of the Guthrie.

Mainstage Programming



The Importance of Being Earnest



The Importance of Being Earnest

by OSCAR WILDE

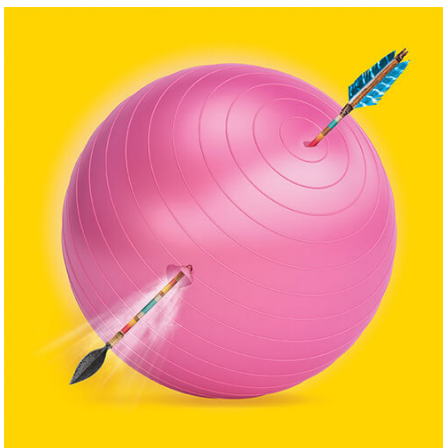
directed by DAVID IVERS

September 9 - October 15, 2023

Wurtele Thrust Stage

A perfectly crafted comedy

Like a brilliantly paced piece of music, Oscar Wilde's masterful comedy woos theatergoers into a state of sheer delight with its mild treacheries and hilarious confusions.



For the People

by TY DEFOE and LARISSA FASTHORSE

directed by MICHAEL JOHN GARCÉS

October 7 - November 12, 2023

McGuire Proscenium Stage

A world premiere comedy by Native voices

Created in partnership with the local Indigenous community and drawing on Minneapolis' Dakota and Ojibwe heritage, this Guthrie-commissioned comedy examines the myriad facets of contemporary Native life with humor and joy.



A Christmas Carol

by CHARLES DICKENS

adapted by LAVINA JADHWANI

directed by ADDIE GORLIN-HAN

based on the original direction by JOSEPH HAJ

November 11 - December 30, 2023

Wurtele Thrust Stage

A timeless holiday tradition

Ebenezer Scrooge greets each Christmas with "Bah! Humbug!" until he is visited by three spirits on Christmas Eve who challenge him to change his closed-hearted ways.



'Art'

by YASMINA REZA

translated by CHRISTOPHER HAMPTON

directed by KIMBERLY SENIOR

December 16, 2023 - January 28, 2024

McGuire Proscenium Stage

A satire on friendship

Brimming with intense and funny dialogue, this Tony-winning satire circles existential questions about life, friendship and what happens when differing opinions and worldviews collide.



Dial M for Murder

adapted by **JEFFREY HATCHER**
from the original by **FREDERICK KNOTT**
directed by **TRACY BRIGDEN**
January 20 - February 25, 2024
Wurtele Thrust Stage

A plot-twisting thriller

Margot is being blackmailed for a love letter from her former (and secret) lover, Maxine, and she thinks her husband is none the wiser. But Tony knows everything — and then some.



The Guthrie Theater presents an Irish Repertory Theatre production produced by Octopus Theatricals

On Beckett

conceived and performed by **BILL IRWIN**
February 17 - March 24, 2024
McGuire Proscenium Stage

A one-man tribute to a literary legend

Using verbal and physical comedy, Tony winner and master clown Bill Irwin illuminates the work of Irish writer Samuel Beckett — one of the most influential theater voices of the past century.



Richard II, Henry IV and Henry V

by **WILLIAM SHAKESPEARE**
directed by **JOSEPH HAJ**
March 23 - May 25, 2024
Wurtele Thrust Stage

An epic theatrical event

Performed in rotating repertory by a single company of actors, the History Plays (*Richard II*, *Henry IV* and *Henry V*) will immerse audiences in the works of Shakespeare like never before.



Skeleton Crew

by **DOMINIQUE MORISSEAU**
directed by **AUSTENE VAN**
May 4 - June 9, 2024
McGuire Proscenium Stage

An acclaimed American drama

In the final chapter of her acclaimed Detroit trilogy, Dominique Morisseau explores the impact of the Recession-era economy while offering a heartfelt glimpse into the inner lives of the Motor City's resilient working class.



Little Shop of Horrors

book and lyrics by **HOWARD ASHMAN**
music by **ALAN MENKEN**
based on the film by **ROGER CORMAN**, screenplay by **CHARLES GRIFFITH**
directed and choreographed by **MARCIA MILGROM DODGE**
June 22 - August 18, 2024
Wurtele Thrust Stage

A frightfully funny musical

A hilarious mashup of science fiction, horror and musical theater, this nostalgic classic boasts Motown-inspired hits, quirky characters and plenty to laugh — and scream — about.



The Guthrie Theater, in co-production with Goodman Theatre, presents

English

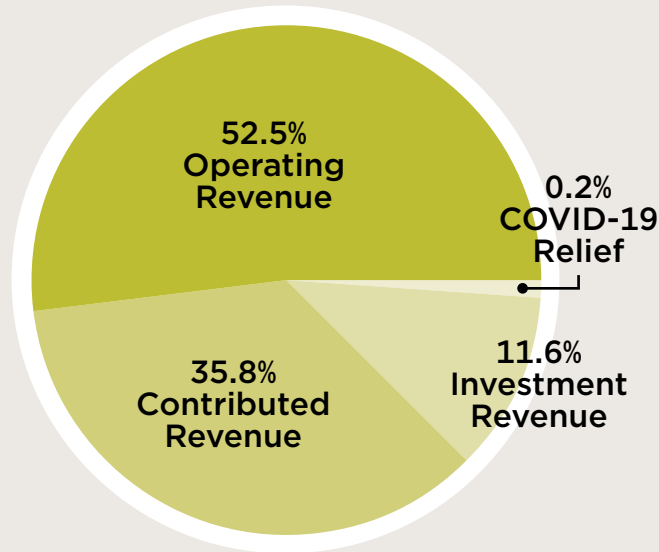
by **SANAZ TOOSI**
directed by **HAMID DEGHANI**
July 13 - August 18, 2024
McGuire Proscenium Stage

An exploration of language and identity

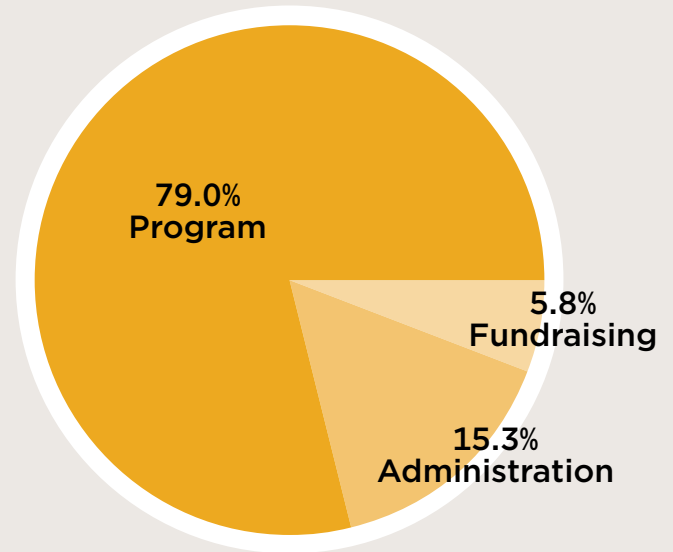
This Pulitzer Prize-winning new play tenderly explores the realities of the language-learning process and the parts of our identities that are lost and found along the way.

Operating Fund

REVENUE, SUPPORT AND GAINS



EXPENSES



Statement of Activities – Operating Fund

August 31, 2024 & August 31, 2023

	23/24 OPERATING	22/23 OPERATING
REVENUE, SUPPORT AND GAINS		
Operating revenue	15,499,278	13,878,571
Contributed revenue	10,570,805	9,753,617
Investment revenue	3,422,100	2,613,738
COVID-19 relief	55,744	2,026,440
TOTAL REVENUE, SUPPORT AND GAINS	29,547,927	28,272,366
EXPENSES		
Program	23,399,189	24,301,467
Administration	4,520,503	5,343,295
Fundraising	1,713,813	2,423,398
TOTAL EXPENSES	29,633,505	32,068,160
NET OPERATING ACTIVITIES	(85,578)	(3,795,794)

A copy of the audit report is available upon request.

Statement of Financial Position

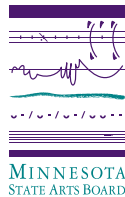
August 31, 2024 & August 31, 2023

	23/24 TOTAL	22/23 TOTAL
ASSETS		
Current assets	15,498,298	12,543,398
Non-current receivables	5,018,205	1,891,652
Investments	68,737,663	63,952,431
Other assets	71,407,719	74,529,996
TOTAL ASSETS	160,661,885	152,917,477
LIABILITIES AND NET ASSETS		
Liabilities		
Current liabilities	7,593,937	7,506,372
Long-term liabilities	1,666,989	1,487,295
TOTAL LIABILITIES	9,260,926	8,993,667
Net assets		
Net assets without donor restrictions	70,852,992	71,907,248
Net assets with donor restrictions	80,547,967	72,016,562
TOTAL NET ASSETS	143,923,810	142,081,411
TOTAL LIABILITIES AND NET ASSETS	160,661,885	152,917,477

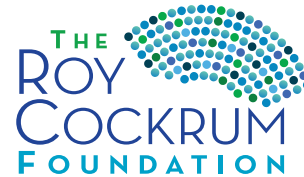
Corporate, Foundation and Public Support

Vital support from our corporate, foundation and government partners allows community members of all ages and abilities to access internationally renowned theater and celebrated artists. Grants from state and federal agencies and local and national foundations provide crucial operating support as well as key funding for new and ongoing programs. To learn more, contact the Development Team at 612.225.6165. For information about sponsorship opportunities and corporate benefits, contact us at give@guthrietheater.org.

\$250,000 and above



This activity is made possible by the voters of Minnesota through a Minnesota State Arts Board Operating Support grant, thanks to a legislative appropriation from the arts and cultural heritage fund.



\$100,000 - \$249,999

David & Janis Larson Foundation



\$50,000 - \$99,999



TheJoyceFoundation

Laurents/Hatcher Foundation



UNITED HEALTH FOUNDATION®

\$25,000 - \$49,999



Fred C. & Katherine B. Andersen Foundation; Harold & Mimi Steinberg Charitable Trust; WEM Foundation

\$15,000 - \$24,999



Hugh J. Andersen Foundation; The Edward R. Bazinet Foundation

\$5,000 - \$14,999

Bank of America; Boss Foundation; The Carlson Family Foundation; Christensen Insurance Group; Cresset; Cyber Advisors; Fredrikson & Byron Foundation; The George Family Foundation; GHR Foundation; Mairs & Power; The Elizabeth C. Quinlan Foundation; Rahr Corporation & Bushel Boy Farms; RBC Wealth Management; Margaret Rivers Fund; Robins Kaplan LLP; Sheehy Construction Company; Sit Investment Associates Foundation; Talcott Resolution; Tennant Foundation; Xcel Energy Foundation

\$2,500 - \$4,999

Dellwood Foundation; Hunt Electric Corporation; Jefferson Lines; Palisade Asset Management; Streamworks; Walmart Giving

\$1,000 - \$2,499

Bachman's Inc.; Federated Insurance; High Point Networks; Art & Martha Kaemmer Fund of HRK Foundation; Beryl & Florence Miller Family Foundation; Sam Miller Foundation; National Checking Co.; Northland Aluminum Products, Inc. (Nordic Ware); Quality Furniture Rental



Annual Fund Contributors

We gratefully acknowledge the generosity of our donors whose annual support enables the Guthrie to remain a vibrant center for theater performance, education and training in our community. To join this group in ensuring the Guthrie continues to thrive, contact the Development Team at 612.225.6200 or give@guthrietheater.org.

Thank you to the following donors who contributed to the FY24 Annual Fund from September 1, 2023, to August 31, 2024.

PLATINUM PRODUCERS

\$100,000 and above

The Martha & Bruce Atwater Fund
Penny and Bill George & The George Family Foundation
Allen & Kathy Lenzmeier
W. Duncan & Nivin MacMillan Foundation
Margaret Wurtele

EXECUTIVE PRODUCERS

\$50,000 - \$99,999

Nancy Evans
David & Diane Lilly
David & Leni Moore
The Sanger Family Foundation
Richard Sattler & Debra Andreas

LEADING PRODUCERS

\$25,000 - \$49,999

Richard & Susan Anderson
Marc & Alicia Belton
Priscilla Brewster
Suzanne Bross

Faith, Hope & Charity Fund of The Minneapolis Foundation
Katherine Harris, Tom Keyser & The Gavia Charitable Fund
Lorraine R. Hart

John & Kathy* Juneke
Patricia & Peter Kitchak
Dr. Tom Knabel & Kent Allin
Sally & Ernest Lehmann Family Fund, in memory of Sally Lehmann
W. Thomas & Christine B. McEnery
Jim & Linda Milow
Lynn & Anders Myhran
Wendy Nelson
Lee & Peg Skold
Weiser Family Foundation on behalf of Irving & Marjorie Weiser
Todd & Kyoko Zaun

PRODUCERS

\$15,000 - \$24,999

Anonymous
Ellen Archibald
Blythe Brenden-Mann Foundation
Tyrone* & Delia Bujold
Jim & Julie Chosy
Margie & David Dines
William & Janice Dircks

Todd Hartman
Timothy A. Huebsch
Margee V. Kinney
John S. Knapp
Kristen Ludgate & Grant Booth
Bill Lurton
Kathleen F. & David W. MacLennan Fund of The Minneapolis Foundation
Keith Martinsen
Jennifer Melin Miller & David Miller
Mary & Ray Mithun
Marilyn Carlson Nelson
Jay Nibbe
The Pincus Family
Bob Rosenbaum & Maggie Gilbert
Meredith & Sam Tutterow
Frances & Frank Wilkinson
Steven & Catherine R. Webster

ASSOCIATE PRODUCERS

\$10,000 - \$14,999

Anonymous (2)
Dr. Tadashi & Susan Allen
Martha Goldberg Aronson & Daniel Aronson
Karen Bachman
Abdhis & Mary Bhavsar
Jennifer Reedstrom Bishop & Jon Bishop
Jane Robertson Blanch Fund

Michael J. Blum & Abigail Rose
Peter & Maura Brew
Carol M. Downie & Gregory J. Thomas
Dr. Mary Anne Ebert & Paul Stembler
Amy & Miles Fiterman
Vicki & Si Ford
Myron I. Frisch in memory of Delores Arlean Lutz
Kenneth Glaser & Janet Heinrich
Dr. Stanley M. & Luella G. Goldberg
The Margaret Grieve Fund
Joseph & Deirdre Haj
Diane & Tony Hofstede
David & Stacey Hurrell
The Kabat Family
The Andrea & Brian Kalis Family
Iris & Jay Kiedrowski
Jeffrey & Lauren Kiesel
Audrey & Jim Lucas
Joan Maclin
Richard McCarthy, Jr. & The C.A. Weyerhaeuser Memorial Foundation
Munir & Sophie Meghjee
Moehnke Family Fund
Renee Montz
Todd Noteboom & Nancy Brasel

Jay & Jennifer Novak
Louise W. Otten
Anne Paape
Brian Pietsch & Christopher Hermann
Nick & Judy Priadka
Mary & Tom Racciatti
Ann Rainhart & Jason Digma
ReBecca & Mark Roloff
Gerald & Julie Rudowsky
Ken & Sally Spence
Dr. Kweli P. & Christina D. Thompson
Dr. & Mrs. Paul L. Trump
T.K. & Linda Walling
The Jan Willette Family
Tom & Nancy Willette
David A. Wilson & Michael J. Peterman
Heidi & Michael Wilson
Karen & John Winkelman
Charles & Julie Zelle

DESIGNERS

\$5,000 - \$9,999

Anonymous (5)
Rick & Joan Ahmann
Dale & Ruth Bachman
Mary & Bryan Bennett
Sue A. Bennett
Linda & Robet Bohnenkamp
Nancy Bright
Buuck Family Foundation

Tom & Nancy Caswell
 Michael V. & Ann C. Ciresi
 Katherine J. Conover
 Benjamin & Laura Cooper
 Jeanne Corwin
 Susan & Dick Crockett
 Ellie Crosby - The Longview
 Foundation
 John W. Dayton
 Mary Dolan - The Longview
 Foundation
 Doug & Kate Donaldson
 Charles & Barbara Donatelle
 Gerald A.* & Kay Erickson
 Martha Gabbert
 Andrew Gaillard &
 Megan Newstrom Gaillard
 Lynn Glesne
 Mike* & Barbara Goldner
 Mary & Peter Gove
 Grinnell Family Fund of The
 Minneapolis Foundation
 Thomas & Mary Gross
 The Head Family Foundation
 Pamela & Ronald Kaufman
 John & Maureen Knapp
 Daniel & Constance Kunin
 Chad M. & Rafina Larsen/
 Larsen Fund
 James & Susan Lenfestey
 Ilo & Margaret Leppik
 Stephen Litton
 George M. Logan &
 Susan H. Holman
 Steve & Kathi Austin Mahle
 Robert* & Polly McCrea
 Family Fund of The
 Minneapolis Foundation
 Helen Meyer
 Katherine Murphy
 David & Karen Olson Family
 Foundation
 Gregory Page &
 Kathleen Blatz
 Lisa Saul Paylor & Marc Paylor
 Katherine Reed &
 Paul Gertenbach*
 Thomas & Nancy Rohde
 Kay Savik & Joe Tashjian
 Rachael Scherer & Stephen
 Imholte/Baci Fund of The
 Minneapolis Foundation
 Bonnie Scott
 Rebecca & Mark Shavlik
 Charles Sorenson
 Jim & Mimi Stake
 Janis & James Stephenson
 Catherine A. Taylor
 Marcia Townley
 Cornie & Betty Ann Wiens
 Lisa M. Wollan
 Paul Woodard

ARTISTS

\$2,500 - \$4,999

Anonymous (2)
 Steven & Beverly Aanenson
 Kevin D. Abrahamson
 Peggy Steif Abram &
 Jon Abram
 David & Cynthia Abrams
 Kathleen R. Adix
 The Joseph Allen Fund of
 The Saint Paul Foundation
 William & Suzanne Ammerman
 Fiona & Chuck Anderson
 Mike & Peggy Anderson
 Steven & Kathy Anderson
 The Gregory & Lauren
 Anthony Fund

Michael Antinone &
 Erika Smith
 Susan & Lloyd Armstrong
 Thomas & Jill Barland
 Allen & Andi Barnard
 David & Grace Bartholet
 Margaret & J.R. Beahrs
 Keith & Mary Bednarowski
 Bob Beltz
 Ellen Bendel-Stenzel
 E. Thomas Binger* &
 Rebecca Rand
 Beth Bird
 Stephanie Boening-Ondik &
 Dennis Ondik
 Boren Family Fund of The
 Minneapolis Foundation
 Jeffrey D. Bores &
 Michael Hawkins
 Lynn & Julie Boyd
 Jim & Marge Brasel
 Deborah & Fredric Bremseth
 Michael & Carol Bromer
 Catherine Brooks & Ari Wolfe
 Sara M. Brown
 Allan & Lou Burdick
 Carolyn Burnett
 Michael & Edith-Nicole
 Cameron
 Tim Carter & Sally Wahman
 Kerry Childe
 Chou Family
 Carla Clasen
 Melissa Cohen Silberman &
 Sheldon Silberman
 Cinda Collins
 Jane & Ogden* Confer
 Stephen & Sylvia Cook
 Paula Cooney & Aldo Walker
 Christina & Casey Corwin
 Jay & Page Cowles
 John & Bette DeMars
 Shahn & Lori Dilks
 Sara & Jock Donaldson
 Nathan Dungan &
 Susan Hawks
 William & Kareen Ecklund
 Sean & Meghan Elliott
 M. Vaughn Emerson &
 Katie Haag
 Richard* & Beverly Fink
 Mitch Finne &
 Sara Van Kempen
 Fullerton Family Fund of The
 Minneapolis Foundation
 Jerry* & Ellen Gallagher
 Steve & Kathy Gaskins
 Heidi & Howard Gilbert
 John & Barbara Goergen
 Michael Goetz
 Bob & Julie Guelich
 Sandra & Barnard* Hall
 Philip & Janet Hallaway
 Corey & Stephanie Harbott
 Emily & Jed* Harris
 Leah Harrison Stich Fund
 William & Kathleen Haug
 Thane & Blanch Hawkins
 Peter & Carolyn Hendrixson
 Ian & Karla Hillier
 The Julianna Marie Hillmer
 Memorial Fund
 Weston Hoard
 Orville C. Hognander, Jr.
 David Hols
 Char Hovi
 Penny Hunt
 Mary Ingebrand-Pohlad
 Rajiv Garg & Sangeeta Jain
 Ann Marie & Scott Janke

Roy & Kathy Jenson
 Ardes Johnson
 Lori Johnson & James MacKay
 Richard* & Bonnie Johnson
 Bruce R. Jones
 Ellen Jones & Robert McKlveen
 Gail & Tom Jones
 Winton Jones Foundation
 Drs. Charles R. & Sally B.*
 Jorgensen
 Timothy Jorissen
 Drs. Scott & Julie Kammer
 Erik & Mandi Karulf
 Ivars & Gloria Kauls
 Lynda Klaus &
 Geoffrey Emerson
 Dr. Perri Kauls &
 Desmond Kilcoyne
 Dr. Thomas E. Kelly
 Kinder-Vealitzek Family
 Fund of The Women's
 Foundation of Minnesota
 David Kirkland
 Ann Kools
 Patricia Kramer
 Drs. Kimberly Krohn &
 John Fishpaw
 Christopher & Michelle Kromm
 Susan K. Kunz
 Ruth & David Legvold
 Richard Leland
 Mac & Mary Lewis
 Noreen & Steve Linney
 David & Peggy Lucas
 Pat & Sara Mack
 Tim Manning & James Bremer
 Margery Martin
 Dr. Robert & Virginia
 McCollister
 Sam & Patty McCullough
 Robert & Laurie McNeill
 Mersky Family Foundation
 William Messer
 Charles & Carolyn Meyer
 Dr. Jan Meyer &
 Roger Jorgenson
 Anne W. & Eldon C.* Miller
 Lucy C. Mitchell - The
 Longview Foundation
 Sheila & Jim Moar
 Alfred P. & Ann M. Moore
 Jack L. & Chris Morrison
 Erik & Karen Nelson
 Les H. Nielsen
 Jeffrey H.J. Nipper, M.D. &
 Terri Drake
 Ron & Toni Noah
 Amanda & Ruben Nusz
 Valdemar & Marilyn Olson Fund
 Greg & Karen Pielow
 Tad & Cindy Piper Fund of The
 Minneapolis Foundation
 Bruce & Kathleen Pohlig
 J. David Price
 Anton & Beth Rang
 Remele Family Fund of The
 Minneapolis Foundation
 Robin Ritter & Ben Emmons
 Jeannine Rivet &
 Warren G. Herreid II
 Jack & Marty Rossmann
 Toby & Robert Rubin
 Jo Ellen & H.L. Saylor
 The Thomas L. & Lynn M.
 Schaefer Family Fund
 Andrew & Monica Schwarm
 Judy Schwartzau
 Nina & Frederick Schwenk
 Mariana & Craig Shulstad
 Richard Silcox

Lawrence J. Sinak &
 Anne Black-Sinak
 Kay Smith
 Peter Spokes
 Steven & Gwen Starr
 Sara & Henry Stokman
 Sulasalmi Fund of The
 Minneapolis Foundation
 Cheryl A. Sullivan
 David Swanson in memory of
 Penny Sweitzer
 John & Laura D. Taft
 Joseph & Kaimay Terry
 Dr. Andrew J. Thomas
 Tschudy Family Foundation
 Joyce & Dennis Wahr
 Ruth & David Waterbury
 Steve* & Melissa Wehrle
 John Windhorst
 Penny Rand Winton
 Sri & Aks Zaheer
 The Honey & Larry Zelle Family

ADVOCATES

\$1,000 - \$2,499

Anonymous (20)
 Alden* & Elizabeth Abraham
 Frank & Barb Abramson
 Carl R. Afams
 Dennis Albrecht
 Autumn & Joseph Amadou-
 Blegen
 Katherine K. Anderson
 Margret & David Anderson
 Elizabeth Andrus Fund of The
 Minneapolis Foundation
 Rosalind M. Annen
 J. Scott Arrell
 Mary Kay Arthur
 Hillary & Joseph Balma
 Robert S. & Adrienne Banks
 Jane & Walter* Barry
 Ross Bartels & Brenda Weigel
 Elisabeth R. Bennett
 Alana Bergman
 Marcy & Randy Betcher
 Gary & Bonnie Birnbaum
 John & Janet Bohan
 Mark & Mary Boorsma
 Karen Bowie
 Steve Boyle
 Elizabeth & Joseph Brama
 Breyer Family Fund of The
 Minneapolis Foundation
 Kelli Brillhart
 Dave & Lonnie Broden
 Leith Brooks Barry
 Thomas Brothen &
 Elizabeth Molberg
 Robert & Janet Calander
 Martha & Ronald Caldwell
 Anne Campbell
 Bruce & Sandy Campbell
 Gary T. & Joan Capen
 Sophie Caplin
 Mark & Mary Ellen Catron
 Dana & Pat Chabot
 Ann & Bruce Christensen
 Eugene & Kay* Christenson
 Timothy Claus &
 Louise Anderson
 Richard J. Cohen
 Stephen L. Cohen
 Steven Brinduse & Terry Cole
 Bryan Crossland
 Toni & Bruce Dachis
 Cy & Paula DeCosse Fund of
 The Minneapolis Foundation
 Kristen Delegard
 Len & Kathy Demmon

Dayna L. Deutsch
 Donohue Novak at Law
 Lois & Joseph Duffy
 Peter E. Eckerline
 Hugh & Joyce Edmonds
 Mary Jo & David Eide
 Doris Engibous &
 Duane Delonais
 Nichole Fairbanks
 Beth Flynn & Mark Ferry
 Steve & Mimi Fisher Family
 Fund of The Minneapolis
 Foundation
 Connie Jo Foote
 Brad & Arlene Forrest
 Chris Foster & Jerry Green
 Daniel H. & Carol Frenning
 Marcy R. Frost
 Dick Furnstahl &
 Terri Stankiewicz
 Alan & Catherine Galbrith
 Leland & Beverly Gehrke
 Nancy & Gary Geiger
 Gratitude Fund
 Linda & Tom Gilligan
 Arlene Goter
 Philip Green
 Arthur & JeanAnn Guetter
 Clay & Sandy Haapala
 Jana & Erik Hagen
 Jon A. Haakenson
 Peggy Hall & Lee Barry
 Mark & Lana Halldorson
 Brita Hansen & Eric Hazen
 Shelly & Michael Hanson
 Steven Harmer
 Sally Hart
 Bonny Hartung
 Jeff Hatcher & Lisa Stevens
 Haugan Family Fund, Greater
 Green Bay Community
 Foundation
 William Hawver
 Les & Judy Heinen
 Lee Henderson &
 Matthew Holen
 Nancy & Dean Heng
 Carrie & Richard Higgins
 Sandra Hitch
 Sue & Nicholas Hjerpe
 G. Benjamin Hocker
 Jack & Linda Hoeschler
 Family Fund
 Elizabeth & James Hughes
 John R. Hulbert
 Bonny & John Hunt
 The John & Ruth Huss Fund
 Warren & Barbara Jeffers
 Susan J. Jerutis
 Emily C. Johnson
 Johnson Leadership Coaching
 Jill Fedje & Eric Johnson
 Lori & Kevin Johnson
 Paul A. & Renee Johnson
 Steve Johnson & Susan Iverson
 Lucy Rosenberry Jones
 Cynthia & Michael Jorgenson
 Richard Y. Kain &
 Katherine Simon Frank
 Andrew & Virginia Kass
 Sean & Betsy Kearney
 Jack & Marilyn Kemme
 Jill Kielblock
 Marie N. King
 Judith Kinsey
 Trisha Kirk & Sara J. Fenlason
 Maureen Kucera-Walsh &
 Mike Walsh*
 Robert & Barbara Kueppers
 Kay Kulp

James H. Kunz
 Kathleen M. Lamb
 Kirk & Jane Landman
 Sandy & Kent Larson
 Benjamin & Ruth Leadholm
 Kent & Denise Lee
 Jennie LeGates &
 Fritz Wehrenberg
 Wendy Willson Legge &
 Gordon E. Legge
 Walter Lentz & Susan Nixon
 Beth & Todd Leonard
 Nancy & John Lindahl
 Jennifer Linde & Julian Bernick
 Eric J. & Larry J. Loyer-Trosdahl
 Laraine MacKenzie
 Karen Malver
 Christine Martin
 Carol A. Martinson
 Joseph Matula
 Sheila & Bernard McDonagh
 Dick & Joyce H.* McFarland
 Family Fund of The
 Minneapolis Foundation
 Jeninne McGee
 Kathleen McKay &
 Lee Soderlind
 Karen & John* Meslow
 Charitable Fund
 Merikay Mestad
 Metropolitan Dance Alliance
 Lavonne Michaud &
 Gregg Bloom
 Michael L. Miller
 Wanda R. Miller
 Robert Milligan & Sharon Danes
 Janet E. Mims
 Mike & Jodi Mooney
 Patricia Mork
 Charlotte & Fred Morrison
 Larry & Tamara Morrissey
 Don & Jean Mueting
 Gwen S. Myers
 NaLa Fund of The
 Minneapolis Foundation
 Gary & Mary Nelsestuen
 Dr. Katherine J. Nevins
 John & Joan Nolan
 Byron & Janet Nordstrom
 Christine C. Noyes
 Steven Oberg
 Fred & Marilyn Olson
 Ahmad & Ruth Orandi
 Michael & Connie O'Sullivan
 April R. Parker
 Jennifer S. Parker
 Charles & JoAnne Parsons
 Greg & Susan Path
 Gary & Jannette Paulu
 Chip & Amy Pearson
 Jamie Pedraza &
 Stephen Gronewold
 Jane Persoon
 Karin & Phil Peterson
 Ron & Kathy Peterson
 Bill Pinegar
 Warren & Tamara Planitzer
 Susan & David Plimpton
 Patricia L. Ploetz
 Dolores Port
 Lorraine A. Potuzak
 Dr. Deborah Powell
 Nancy & James Proman
 Kari Fedje Rasmus &
 Dan Rasmus
 Rehael Fund - Roger Hale/
 Nor Hall of The Minneapolis
 Foundation
 Barbara Reid & Chris Meadows
 Sadie & Ken* Reiners

Nancy & Kevin Rhein
 Dr. & Mrs. Rice
 PJ & Lara Ritters
 Barbara & David Roen
 Christopher B. Rogers
 Barbara Romstad
 Elizabeth Rosenberg
 Carol H. Rueppel
 Bob & Sharon Ryan
 The Susan & John Ryan
 Charitable Fund
 Tom Sandhei
 Fred & Ruth Sauer
 Ed & Corry Schermerhorn
 Richard & Judith Schmidt
 Barbara J. Schmitt
 Tom & Mary Schmitz
 Beth Schneider
 Karen & David Scott
 Sandra Sedo & Mary Maurice
 Justin & Manon Seitz
 John Shepard & Susan Brust
 Morris & Judith Sherman
 Lorri Sills
 Ross & Kathy Simpson
 Richard & Mary Jo Skaggs
 Helene & Jeff Slocum
 Eleanor & Chris Smith
 Dr. James & Joanne Smith
 Steven Snyder & Sherry Stern
 Lori J. Sommerfield
 Nikki L. Sorum & Simon Foster
 April Spas & Krzysztof Burhardt
 Curt & Louise Speller
 Carol & Doug Steenland
 Ben & Mary Stephens
 Dana & Stephen Strand
 Linda Svitek & David Feroe
 Sally Swart Friisoe
 Kathleen Sweetman &
 James Waight
 Jerry Swenson
 Melissas & Brian Raney
 Marsha & Gary Tankenoff
 Carolyn Taylor
 Kay & Jim Tennessen
 Becky Thacher-Bell &
 Tracie Bell
 Timothy Thorson
 Gerald & Susan Timm
 Mark & Jane Townes Woodburn
 Carol & Lynn Truesdell
 Donna L. Trump
 Larry & Nancy Tschaekofsk
 Stephen B. Vandever
 Lori A. Vosejпка
 Stephen & Carey Weiler
 Jo & Howard Weiner
 Ellen M. Wersan &
 Timothy M. Sandry
 Nedra & John* Wicks
 Beth Widstrom-Anderson
 Georgia & Peter Windhorst
 Frederick & Eleanor C. Winston
 Ian Wolfe
 Timothy & Susan Woolard
 Dr. Alvin S. & Sue Woolard

ASSOCIATES

\$500 - \$999

Anonymous (27)
 Lilah E. Aas
 David Abbott &
 Jane Voglewede
 Mark Addicks II & Tom Hoch
 Marguerite Ahmann &
 Carey Jeremiason
 Dr. Susan Alpert
 Trevor L. Andersen
 Gretchen B. Anderson

Dr. Richard Anderson*
 Linda Andrews
 Lee Anne & Gene Lack
 Jim Azarski &
 Nancy Werner-Azarski
 Howard & Wendy Bach
 Lee W. Bachman
 Margaret Baldwin
 Janet Balej
 Richard & Mary Lyn Ballantine
 Judy N. Bearman
 Jeffery A. Beck
 Nicole Behm-Koep &
 Kraig Koep
 Gail & John Bertossi
 Keelin Kane & Mark Bixby
 Carla A. Blumberg
 Karen Blumberg &
 Daniel Rischall
 Verna Kay Bormann
 William & Rita C. Bourne
 Mary S. Bowman
 Mike & Ann Brilley
 Elizabeth Buckingham &
 John Owens
 Jan & Paula Buckner
 Tim & Jennifer Buechele
 John & Claire Butler
 Joan J. Blyre
 Dr. David & Lisa Byron
 Patrick & Marilyn Cain
 Kathleen & Paul Campbell
 Genna Carlson
 Louise Ann Carlson
 Richard & Mari Carlson
 Emmett Carpel &
 Katherine Meehan
 Lynn Casey & Mike Thornton
 Kathryn Christenson
 Andrew & Tessa Clark
 Richard Clay
 Mary E. Condon
 Stephen & Patricia Contag
 Barbara K. Corbusier
 Jane S. Cowles
 Barbara & Richard Crouter
 Willard & Deborah Crowley
 Rachel A. Dahms
 Kenneth Damlo
 Arline L. Datu
 Tom E. Davis
 Lance & Nancy De Roos
 Jo DeBruycker in memory of
 Meghan DeBruycker
 Linda & Phillip Dech
 Shauna M. Dee
 Bronwyn D. Deen
 Sherri DeLaHunt
 Ellen Delaney
 The DeLapp Family
 Stacy Dennis
 Pamela Desnick
 Terry R. Diebold
 Stephen F. Dierdorf
 Mary C. Doerr
 Al & Nancy Dorris
 Barb & Kenn Dubbels
 David & Karen Dudley
 Brandon Elliott
 Steven M. Ellwood
 Jane Emison & Mike Tierney
 Colleen E. Ennen
 The Faber Family
 Lyle & Jane Fahning
 Damon & Becky Farber
 Robert & Jane Buckley Farlee
 Lisa D. Fazzino
 John J. Feigal
 Nancy Feldman
 Charles & Anne Ferrell

Carol J. Fitzgerald
 Sarah Fjelstul &
 Francois Charette
 Thomas Flotte & Debra Bell
 Matteo Fonda-Bonardi
 Jean Forster
 Caroline & Dutton Foster
 Wood & Ron Foster-Smith
 William & Deborah Fristad
 Dan & Sandy Frump
 Carol & Glen Fuerstneau
 Gayle Gaskill
 Patrick & Patricia Gastonguay
 Pat Gavan-Gordon
 Tom Geisen & Joan Prairie
 Dr. Gunda Georg
 Richard & Marsha Gould
 Tim Grady & Catherine Allan
 Mary & Tim Gray
 Joe Green & Trudi Anderson
 Cliff & Kim Greene Fund of The
 Minneapolis Foundation
 Matthew & Rachel Gregg
 Stacy & Jim Gregory
 David & Lynn Vander Haar
 Arthur & Elaine Halbardier
 Cecelyn Hale & Glenn Miller
 Charitable Fund
 Louane Hann & John Payne
 Craig & Margaret Hanson
 Stephen & Carla Harner
 Karen A. Harrison
 Cynthia Hasselbusch &
 Larry Espel
 Michael L. Hatfield
 Bob & Kim Hayes
 Colleen & James Hayes
 Lisa Heidenreich David &
 Kris Hendersson
 Vickie Hepler
 Gail Hesselbrock
 William Hession, M.D.
 Hibbs Brenner Family Fund of
 The Minneapolis Foundation
 Allen & Joanne Hinderaker
 Karen & Chris Hodgson
 Thaddeus Hogan
 John Horvath &
 Nancy Mendelsohn
 Chuck Huff & Almut Furchert
 Melissa & Clifton Hull
 Marilyn Hurler
 Jeanne & Mark Innerbichler
 The Jackson Family
 Helena E. Jackson
 Patricia James
 Garry W. Jenkins & Jon J. Lee
 Kathy Jenkins
 Jane A. Jensen
 Jamie L. Johnson
 Lisa Johnson
 Luann & Carl Johnson
 Neal & Elizabeth Johnson
 Jeriann & Brian Jones
 Jim & Caryn Josephson
 Karen S. Jubie
 Angela Kaas
 Kathy & Bob Kachman
 Linda S. Kafka
 Miriam Kagol
 Catherine & Joseph Kalkman
 Sanjay & Manju Kalra
 Barb & David Kaminski
 Bloomfield Karasov Fund of
 The Minneapolis Foundation
 Esa Katajamaki & Jeri Nelsen
 Adele Kaufman
 Brad & Linda Kennedy
 Robin Keyworth & Steven Haasl
 Anupam & Elyse Kharbanda

Dr. Anthony L. Kiorpes
 Diane A. Klein
 Larry & Anne Klueh
 Dr. Michael & Martha Koch
 H. Jane Koll
 Anna Korinko &
 Charlie Petersen
 Susan Krabbenhoft
 Thomas & Mary Krick
 Kubo DellaTorre Charitable
 Fund of The Minneapolis
 Foundation
 Susan & Hart Kuller
 Amanika Kumar &
 Sarah Chairpairini
 Meredith G. Kvalness
 Paulita LaPlante
 Barbara LaRose
 Carol A. Larson
 Connie & Alfred Latendresse
 Tony Lau
 Snow Ledbetter Moen &
 Chris Moen
 Steve & Jenifer Leitch
 JoAnne Lewellen
 Lisa & Jon Lewis
 Richard L. Libby &
 Margaret L. Saline
 The Liljemark Family
 Daniel & Martha J. Lips
 Dr. Martin Lloyd
 Ann & Keven Lock
 Karen & John Loheit
 Ann C. Lowry &
 John W. Overton Jr.
 Juanita & Richard Luis
 Brandon J. Lukach
 William Maass &
 Bonnie Stewart
 Craig & Deb Maki
 Kelly E. Mark
 Kitty & The Reverend
 Dr. Ed Martin
 Sarah C. Martin
 Adam Maurer &
 Nicola Derryberry Maurer
 Margaret McBride
 James P. McCarthy &
 Gloria J. Peterson
 Paula & John McClung
 McDermott Family
 Carol A. McDonald
 Susan & William McKnight
 Roberta Megard*
 Dan & Christina Meyer
 Mary Zitur Miley & Timothy
 G. Miley Fund of The
 Minneapolis Foundation
 Gail E. Miller
 Kristin J. Miller
 Matt Miller & Alyssa Skinner
 Karen Moe
 M. Valeriana Moeller
 Olivia & Jonathan Monson
 The Moosehorn Fund of The
 Minneapolis Foundation
 Kristin Morris
 David & Kimpa Moss
 Andrea Mueller
 Greg Mueller
 Timothy & Patricia Murphy
 Benjamin & Robyn Murray
 Charlene K. Myklebust
 Robert & Pamela Mylerberg
 Jill Nauman & Bruce Johnson
 Diane & Rick Nelson
 Patricia Nemeth
 Merritt Nequette &
 Nancy Hartung
 David & Colleen Ness

Pamela Neuenfeldt & Don Williams
Dale & Kelly Nitschke
Karle & Diane Nolte
Donald H. Nordstrom
Sarah J. Nowlin
Gary Nygaard
Scott & Sandra Nygaard
Ann C. O'Fallon
Benedict* & Rita Olk
Eugene & Julie Ollila
Gloria & David Olsen
Nathan Oppedahl
Kalli S. Ostlund
Mary Ann Palmer
Jenny N. & Scott T. Peterson
Steven & Paula Pickrel
Michele Pierce
Connie Plaehn
Gloria G. Plautz
Amy E. Pollock
Anne & John Polta
Wendy Andersen Postier
Sarah Rescigno
Larry & Geri Retzlaff
David Ridley & Elvia Moreta
Alyssa J. Siems Roberson
Tracy & John Rode
Cheryl L. Rosheim
Arlene & Jerold Roth
Denise Rutherford & Maurice Kuypers
Mitra Sadeghpour
Michael Sandberg
Sharon Sandeen
Bill M. Savage
Mary E. Savina
Glen Schafer
Kathryn Schenk & Allan Mahnke
Ann-Therese E. Schmid
Larry F. Schmidt
Bradley Schoolman
Paul L. Schumann
Belle Scott
Doris J. Seely
David & Renee Segal
Bruce & Julianne Seiber
Laurel J. Severson
Robert & Virginia Seybold
Mary & Mark Sigmond
Laura Silver & Jeff Hertzberg
Bonita Sindelir & Kenneth Keller
Darryl Smith
Rosemary Soltis
Robert J. Spencer Esq.
Daleen Stamas
Joe & Karen Steger
Ellen J. Stein
Sharron & Oren Steinfeldt
Bruce & Pat Steuernagel
Bob Striker
Sandra K. Sunde
Joseph S. Tachovsky
Jeffrey & Katherine Tane
Jean Taylor
Missy Teff
David & Naomi Tetzlaff
Michelle & Douglas Thayer
Wendy L. Thomas
Neal Peterson & Deanna Thompson
Missy Thompson & Gar Hargens
Susan Tollman & James Heine
Michele R. Traub
Tom & Bonnie Umhoefer
Karen & Bill Van Schyndel
Dr. & Mrs. Edward Vaurio
John & Janice Velgersdyk

Paula Vesely
Nancy & Ted Walczak
John Wald & Marianne Remedios
Laureen Walker
Jim & Idelle Walton
David & Mary Ann Walk
Nancy & David Warner
Randall & Janet Warren
Eric Weber
Margaret R. Weber & Robert B. Whitlock
Jeff & Judy Weidner
Gerald & Dorothea Weisman
E. Thomas & Rita D. Welch
Sarah E. Weller
The Westlund Family
Rob & Susan S. White
David R. & Laura Witte
Susan & J. Terrence Wolkstorfer
Louise C. Wood
Shay & Brenda Wyley
The Young Family
Oliver & Rebecca Young
Paul Zellweger & Elizabeth Stewart

FRIENDS

\$250 - \$499

Anonymous (31)
Dr. David & Rev. Holly Aastuen
Constance A. & Wayne Adkisson
Janine M. Aich
Kathleen & Gerard Albanese
Janet H. Albers
Carolyn & Rob Albright
Sharon & James Allen
Orrin Alt
Grant Amadio
Joanne Ames
Amy C. Anderson
Barbara & Van Anderson
Deloris A. Anderson
Mary Alice Anderson
Patti M. Anderson
Patti & Cornell Anderson
Sharon Anderson Earl & Bob Anderson
Leah & Chris Armstrong
Ward & Kathy Armstrong
Jon & Linnea Asp
Jeannette Bach
Margaret Bailey
Tim & Nancy Bakalakos
Daniel Baker
John Bale
Dallas S. Balsiger
Jeff & Audie Banwart
Diana J. Barber
Kara & Justin Barrow
Bob & Gail Barsness
Paula Baudhuin
Donald Bell & Elizabeth McNerney
Barbara Bender
Mark Bergaas & Mark Ceilley
Gary & Helen Bergren
Jim & Debra Billigmeier
Robert & Linda Birnbaum
Julie A. Blehm
John & Sally Blumenfeld
Thomas & Laura Boedeker
Karen M. Bohaty
Jandeen Boone
Robert & Rebecca Borchardt
David & Patricia Borchert
Richard & Judy Borgen
Steve* & Gail Brand

Carol Brandenburg
John I. Brant
Jane Bremer
Linda & George Brooke
Alyson M. Brooks
Cheryl Brown
Daniel Brown & Elisa Lande-Brown
Sally W. Brown
Thomas & Joyce* Bruckner
Thomas C. Bryson
Johanna M. Buch
A.S. Buchanan
Vicki Bunker
John Bunz
Marilyn W. Burbank
Emil & Margarete Busse
Kathy Cahill
Carlos & Wendy Calderon
Douglas A. Caldwell
Ellen Calebaugh
Charlotte Carey
Patty Carlin
Gary & Carol Lee Carlson
Barbara A. Case
Glenna Case
Karen M. Chase
Sara J. Chase
Ronald & Gloria Christenson
The Clancy Fund
Terry & Kathy Clark
Carolyn Hale-Coldwell
Matthew & Karla Cole
Maryanne Coleman
Katie & Kevin Conneely
Ron & William Connelly
Valerie Conner
Earl & Linda Cook
Phillip R. Cooke
Jeff & Janet Cooper
Joan K. Costello
Willie Crear III
Matthew Crellin & Joan Cochran
Cynthia L. Crist
Madeleine Crusing
Diana Czel
Marjorie Dahlager
Bruce Dalgaard & Carol Korda
James M. Davies
Tom & Judy Davin
Bill & Ruth Davini
Edward & Sherry Ann Dayton
Jim & Jacque DeBuse
Margaret Demaris & Mr. Joel Demarais
Carolyn M. Deters & Timothy J. Wicker
Chuck & Bonnie Deutsch
Mary Dew & David Miller
Jon & Amy Dickerson
Robert Dickson
Lauren Nguyen & Joe Dixon
Dr. Bridget Doane & Mr. Grey Hubbard
Harold Dobzewitz & Anne Clark
Katherine D. Doerr
Elizabeth Dokken
Anne M. Donahoe
Heather & Nick Donohue
Shawn & Amanda Donovan
Sue Dosal
Robert & Pam Douglas
John Dubois
Janet & Kevin Duggins
Susan & John Dunlop
Roger & Kinney Eberhart
Vernon & Bonnie Eidman
Justin T. Ellis
Maggiy Emery

Hope Esparolini
Bruce & Eileen Evans
Karen & Rick* Evans
Anne L. Ewing
Rebecca I. Fabunmi
Debra Fagan
Tim & Noreen* Farrell
Doug Federhart & Stuart Holland
Robert & Linda Fisher
Kelly L. Fix
Mary Fleege
Glenn & Patti Flekke
Justin Foley
Patricia M. Foley
Frederick G. Frogner
Michael Fuhrman & Kim Klein
Steve G. Swenson
Lawrence & Wilhelmina Gaenzle
Mary & Jay Gallagher
Susan Gallagher
Cantry O. Ganz
Marlene S. Garvis
Neil Gatzow & Sue Julien
Patrick Gearhart
Jackie A. Gehrke
James Gergen
Betty B. Gilchrist
James & Mary Gillespie
Robin Gillette
Barbara Glas
Mimi & Sherry Gleekeel
James A. Goins
Marlene & Sanford Goldberg
Steve Sigmond & Jennie Goloboy
Mary Jo & Barry Graham
Blake R. Grangaard
Todd F. & Debra N. Grant
Laurie & Edward Greeno
Robert Gregory
Chad & Bethany Griffith
Gwesyn & Gloria Griffiths
Fund of The Mankato Area Foundation
Jan Grimes
Chadwick Gugg
Tom & Jaci Guglielmi
Curt & Betty Gumbrell
Jon & Diane Hallberg
Mark & Mary Jo Hallberg
Doug Halliday
Dr. Jo-Ida C. Hansen
Linda Hanson
Lowell M. Hanson
Georgiana Harris
Kevin & Ila Harris
Rebecca L. Harris
Cory & Genna Hart
Howard Hartstein & Kay Ruhoff
Susan Levy Haskell
Chad M. Hauge
David & Karen Haugen
William B. Hauser
Stephen & Patricia Haynes
Tim & Carol Hearn
Linda J. Heine
Karen M. Hennes
Melba & John Hensel
Susan E. Herder
Lisa Higgs & Toby Kohler
Richard & Joan Hilden
Ms. Alice J. Hill
Cynthia & Russell Hobbie
William & Kathy Hogan
Ben & Laurel Holder
Cynthia L. Huberty
Doug & Mary Hudson
Emily E. Hudson

Joerg & Jill Hutmacher
Jennifer J. Inderlee
Steven & Michelle Inman
Dianne L. Iverson
Robert & Kirsten Jacob
Arnold F. Jacobson
Jeanne & Mark Jacobson
Ann Jaede
Barbara Jenkins
David L. Jensen
Heather L. Jensen
Leanne & Allen Jergensen
Lenna Johnsen
Kathy Johnson
Nancy Nygaard Johnson & Jim Johnson
Scott A. Johnson
Timothy Johnson
Brian E. Jones
Timothy Joson
Gerald & Rebecca Kajander
Christine Kucera Kalla & Mark Kalla
Denise Kania & Jim Pfau
Arnold & Shirley Kaplan
Dr. Martin & Carole Kaplan
Jim & Linda Karkhoff
Tim & Kim Karnitz
Paul R. & Pat Kaufman
Jasmine Z. Keller
Nadine Kelly
Mary Jo Kelsey
Dr. G. Paul & Nancy Kerestes
Dorette Kerian
Casandra Kiehn
Loras Kilburg
The Kim Family
Benjamin Kjos
Andrew Kline
Michael Klingensmith & Ruth Shields
Benjamin Knaak
Mary & Stuart Knappmiller
Wyn Knittel
John & Maureen Knoedler
David & Mary Koehler
David L. Koontz
Lisa G. Korslund
Ruth Krusen
Christine G. Kunitz
Lynn E. Kvalness
Diane LaCasse
Rita J. Laker-Ojok
Eric Lampland
Christopher L. Lang
Craig & Gwyn Lang
David Larson
Matthew W. Lasley
Ron & Nancy Lassow
Tim & Robyn Leer
Angela Lehmann
Ruth N. Lemire
Anne Lewis & Peter Nord
Christine M. Lick
Brett & Deanna Lillemo
Yvonne Lindsay
Christopher L. Lang
Anna G. Lleal & Vincente Torres
Randy E. Long
Ronald J. Lorentzen
Elizabeth A. Lowe
Catherine & Bill Loye
Eric & Cindy Lundin
Laurel Lungstrom
Keith W. Lutz
Richard & Jean Lynch Fund of The Catholic Community Foundation
Ellen & David MacDonald

Karen L. Mackenzie & W. Brooks Donald
 Kathryn E. Macomber
 Dr. Joan Madden
 Rhoda & Don Mains
 Sandra & Tom Mallon
 Paul & Patricia Mamula
 Tiffany L. Marx
 R.R. & C.B. Maslonkowski
 Jack & Sarah Matasosky Foundation
 Jeffrey & Helen Mathison
 Tom & Sue McCarthy
 Kim & John McDevitt
 Christopher McDonald
 Katherine & Timothy McGinley
 Terri & Jack McKeon
 Mitchell & Jan McMillen
 Alison & Andrew Mellin
 Kathleen & Mark Mellstrom
 Alli Mertins
 Judy & George Metcalf
 Stephen C. Meyers
 Russ & Jan Michaletz
 Mary A. Miesle
 Barbara J. Miller
 Ben Miller & Elise McKeever
 Ryan D. Miller
 Anthony Mills
 Sara & Bruce Monick
 Bill & Karen Montgomery
 Janice A. Morlock
 Kevin & Abby Mosher
 Susan Muench
 Paul & Patricia Mulcahy
 Barbie Mundt
 David Munn & Linda Luksan
 Jennifer & Jeffrey Murray
 John & Joyce Myers
 Fritz Nelson & Mina Fisher
 Jordan J. Nelson
 Bob Nesheim & Marlys Johnson
 Tom & Regina Neville
 Bruce & Edith Nicholson
 Joan & Dick Niemiec
 Betsy M. Nigon
 The Nixon-Moeller Family
 Judy Nobles
 Lynn B. Noland
 George Nudell & Liba Casson-Nudell
 Bill & Caroline O'Brien
 Mike & Barbara O'Connell
 Kevin & Ann O'Connor
 Laverne A. Ogamba
 Chris Okoroegbe
 Debera O'Leary & Scott Bullock
 Brent K. Olson
 Cynthia L. Olson
 Theresa Olson
 David Oman
 Ordell J. O'Neill
 Timothy W. O'Neill
 Judy Opheim
 Mark & Ann Oswald
 Sandra H. Overland
 Dick & Barbara Owens
 Marjorie Page
 Dr. & Mrs. Michael Paparella
 Anne Parker
 Frank & Barbara Partyka
 Larry & Marie Past
 Keith Peacock
 James & Joan Pearson
 Richard & Mary Ann Pedtke
 Austin Mutual Insurance Company Foundation
 Josh R. Peterson
 Ed & Peggy Pluimer

Frank Pommersheim & Anne Dunham
 Nylce Prada Myers
 John & Elizabeth Quinn
 Catherine Racer
 Betty & Steven Ragaller
 Barbara Randolph-Anderson & Steven Anderson
 Maureen Byrnes Rangen
 Karen Rasmussen & Paul Zagaria
 Dr. Michael & Carol Rath
 Bill & Barbara Read
 Milford Reid & Clementine Reid
 Lynn Reuvers
 Elizabeth Reynolds
 Ede & Jack Rice in memory of E. Robert Kinney
 Gerald Richman & Kate Sandweiss
 John Riehle
 Patrick Riley & Natalie Roholt
 Angela D. Robinson
 Christopher J. Robinson
 Mary C. & Stephen W. Robinson
 Martin & Jo Rockwell
 Christopher & Kimberly Rodel
 James & Sheren Rogne
 Jeff & Robin Roland
 Tamara & Michael Root
 Nick & Chloe Roseth
 Carol Rudy
 Lisa K. Ruehlow
 Jeffrey W. Rundgren & Marcia L. Stephens
 Kelly Sanderson & Brian Bisesi
 Gina Sandgren & Ross Solwold
 Shirley & Michael Santoro
 Susan & Mark Schaeffer
 Chas & Jeanne Scheiderer
 Paul & Linda Schelin
 Carol Schirmers
 Kathy A. Schleichert
 Mary Schneider
 Dorothy & Owen Schott
 Jo Ann Schroeder
 Stan Schwantes
 Jodi & Dick Schwegman
 Dorothy N. Scott
 Stephen & Sharon Segal
 Randall & Katherine Seifert
 Richard & Linda Seime
 Susan C. Setter
 Bea & Tom Sexton
 Katherine Shane & William Woodhouse
 Maggie Shea & Thomas Heinen
 Monica M. Shearon
 Thomas & Linda Sheran
 Elizabeth Short & Richard Cozine
 Mariah Shriver
 Jeanne M. Simpson
 Charles & Susanne Smith
 Corey Smith & Jason Jacobson
 John A. Sorteberg
 Richard Soule & Deborah Fineman
 Dennis Spano
 Laurel Spence
 Sherry & Michael Spence
 Joseph Spiegel
 Erik Springer
 Andrew A. Springhorn
 Richard & Mary Steege
 Mary & William Steinbicker
 Susan Steinwall
 Michael Stiegler & Sonja Savre
 Sharon A. & Thomas J. Stoffel

R & Becky Stolee
 James S. Stolley Jr.
 Robert & Patricia Strickland
 Mark G. Sundsrud
 Ava K. Suzuki-Lambrecht
 Janet & Craig Swan
 Jericho & Cassandra Tabor
 Edward Taylor
 Sharon Teska & Andrew Nederveld
 Kay Thomas & Jim Rustad
 Rol & Edith Thorstenson
 Susan M. Thurin
 Anne & Jerome Tiller
 Peter & Michele Timmons
 Steven & Kathy Tinker
 Sierra R. Tumbleson
 Karin Tansek & Erol Uke
 The Van Ripper Family
 Dyan Venters
 Jose C. Virgen-Ceja
 Lisa Vitkus
 Virginia M. Vogt
 Shannon & Carrie Waldrop
 Kay Wallace
 Dorothy Wandrei
 Peter S. Wattson
 Carolyn Weber
 Joshua Weir
 Lisa L. Weisman
 John T. Wetzell
 John & Sandy White
 Samuel & Monica Wiant
 Phillip Wicklund
 Harvey Wiersgalla
 Aileen Williams
 Merlyn & Twila A. Winter
 Adrienne S. Wiseman
 The Wisniewski Family
 Ruth A. Wood
 Judy Woods
 Marcae J. Woodward
 Katharine & Richard Workman
 Joseph M. Wright
 Patricia B. Wright
 Jane U. Young
 H. Ziemer
 Aaron & Erin Zimmerman
 Jo & Steve Zimmermann
 Judy (BoBo) Zinn
 Nadim Zoberi

GUTHRIE HERITAGE SOCIETY
The Guthrie gratefully acknowledges patrons who made planned gifts to ensure the theater continues to delight and challenge audiences for generations to come.

Anonymous (22)
 Dennis Albrecht
 Patrice Alkire*
 Barbara T. Anderson
 Rolf L. Andreassen, M.D.* & Norma Neumann
 Albert Andrews, Jr.
 John & Dr. Virginia Lupo Ankeny
 Martha Goldberg Aronson & Daniel Aronson
 Marcia J. Aubineau
 Karen Bachman
 Ruth G. & Dale Bachman
 Nancy Balto & Mary Dressel
 Judson & Carol Bemis
 Catherine Benson
 Mardi Bentzen

Carol J. Bergeson
 E. Thomas Binger* & Rebecca Rand
 Jennifer Reedstrom Bishop & Jon Bishop
 Susan J. Blumentals
 Emily & Charles Boigenzahn
 Richard & Judy Borgen
 Suzanne Bross
 Tyrone* & Delia Bujold
 Diane Bundlie
 Michael & Edith-Nicole Cameron
 Joan & Gary Capen
 Kenn Carlson & John Stofko
 Darlene J. & Richard P. Carroll
 Gerald Cavanaugh
 Dana & Pat Chabot
 Mark Chatinsky
 Jim & Julie Chosy
 Edward & Suzanne Constantini
 Barbara Corbusier
 Page Knudsen Cowles & Jay Cowles III
 Hume Cronyn*
 Dr. & Mrs. David Dahlgren
 John & Mary Lou Dasburg
 Thomas E. Davis
 Skip Davis-Cochrane
 Jo DeBruycker in memory of Meghan DeBruycker
 Janna P. DeLue
 Dr. Mary Anne Ebert & Paul Stembler
 Mildred A. Eckert*
 Pat Edwards
 Robert E. & Audrey* Englund
 David & Sheryl Evelo
 Todd Joseph Ferrara
 Katherine Price Fink
 Carol J. Fitzgerald
 Nikki Sorum & Simon Foster
 Pamela A. & Gary M. Fredrickson
 Sally French*
 Daniel & Carol Frenning
 Pat Gavan-Gordon
 Penny & Bill George
 Robert E. Gilbert
 Gregory Giles
 Judith Moore Goff
 Arlene Goter
 Charlotte Grantier
 Anne Gray & George Jacobsen
 Karen & John Gray
 Pierson* & Florence* Grieve
 Joseph F. & Marjorie V.* Grinnell
 Polly Grose
 William H. Halverson
 David & Kristine Henderson
 Kenneth* & Elayne* Hengler
 William Hession
 Katherine L. Hibbard
 Shelly Hilgers
 Ian & Karla Hillier
 Susan Fey Hoffe*
 Diane & Tony Hofstede
 Dana W. House*
 Charlyne Hovi
 Bradley A. Hoyt
 Marian V. Hughes
 David & Stacey Hurrell
 Suzanne Fermaud Inman* & Thomas Inman
 Dennis R. Johnson* & Mary Katynski-Johnson
 Lori Johnson & James MacKay
 Barbara J. Johnston
 Drs. Charles R. & Sally B.* Jorgensen

Mary L. Josefson
 William* & Suzanne Joyce
 Kathy* & John Juneke
 Ivars & Gloria Kauls
 Tim Kellar & Joe Polonski*
 Robin Keyworth & Steven Haasl
 Peter & Patricia Kitchak
 John S. Knapp
 Sue Kotila
 Jodee & Nick Kozlak
 Harriette & Michael Krasnoff
 Maureen Kucera-Walsh & Michael Walsh*
 Kay Kulp
 Carol A. Larson
 James & Susan Lenfestey
 Kathy & Al Lenzmeier
 Lisa & John Lewis
 Archibald* & Edith Leyasmeyer
 Libby Rose Family Fund
 Benjamin & Helen* Liu
 Jon Michael Logue & Richard M. Bosard*
 Thea L. Lopatka
 Dr. Charles H. Luedtke
 Anita Makar*
 Nancy & James Manske
 Carol A. Martinson
 Robin McDougal
 William & Nadine McGuire
 Wade McLaughlin
 Robert* & Roberta* Megard
 Jennifer Melin Miller
 William Messer
 Dr. Janice A. Meyer
 Anne W. Miller
 David & Leni Moore
 David Munn & Linda Luksan
 Vivian Jenkins Nelsen
 Rodney L. Nelson
 Merritt C Nequette & Nancy Hartung
 Jay Nibbe
 Bruce & Edith Nicholson
 Kendra & Dawn Ogdon
 Joan & David Olson
 Marri M. Oskam
 Louise Otten
 Judi McLean Parks
 Keith A. Peacock
 Deane G. Peters*
 Jennifer N. & Scott T. Peterson
 Ms. Cynthia Pope
 Roger Ramthun Darwin & Geri Reedy
 Jack & Marty Rossmann
 Arlene & Jerold Roth
 Ted & Aileen* Rowe
 Berneen Rudolph
 H.L. & Jo Ellen Saylor
 Tom & Mary Barber-Schmitz
 Cheryl & Dennis Schneider
 Donald Schoenbaum & Patricia Nygaard
 Robert & Linda Schreiner
 Jo Ann Schroeder
 Arthur* & Nancy Schwalm
 Bonnie Scott
 Henry* & Gail See
 Kerri Shear
 R. Craig & Mariana R. Shulstad
 Melissa Cohen Silberman & Sheldon Silberman
 David & Deborah Sjoberg
 Lee & Peg Skold
 Mary L. Smith
 Sheila Smith
 John Spokes & Casey Stangl
 Richard & Carol Stahl
 Drew Stewart

John Stielow*
 Glenda & Richard Struthers
 Cynthia & Charles* Stuck
 Ron & Margaret Tabar
 Joseph Tashjian & Kay Savik
 Margaret J. Thomas
 Timothy J. Thorson
 Julia Colman Timm
 Dr. Peter H. Ullrich
 Mary W. Vaughan*
 Roman & Alice* Verostko
 Philip* & Joanne* Von Blon
 Jody V.
 Norene Wade
 Steven & Catherine R. Webster
 Irving & Marjorie Weiser
 David P. Welle &
 Rosemary Reinhardt
 Gary & Andrew Whitford-Holey
 Tim Wierzbicki
 Robert E. & Barbara A.* Will

C. Angus* & Margaret Wurtele
 Charles A. Zelle
 Elizabeth & Joseph* Zetah

VINE & DINE FUND-A-NEED DONORS

The Guthrie is pleased to acknowledge donors who made special gifts of \$1,000 or more during our Vine & Dine event on June 28, 2024.

Anonymous (4)
 Martha Goldberg Aronson & Daniel Aronson
 Corie & Marty Barry
 Maureen Bazinet Beck
 Jane Robertson Blanch Fund
 Jason Bowles & Carla Vernón
 Roma Calatayud-Stocks & Thomas Stocks

Gerald & Diane Carlson
 Charlotte & Julian Chase
 Jim & Julie Chosy
 Margie & David Dines
 Ludmila & John Eklund
 Jane Emison & Luella G. Goldberg
 The Margaret Grieve Fund
 Joseph & Deirdre Haj
 Todd Hartman
 Jeff Hatcher & Lisa Stevens
 Jeff & Gabe Haydock
 Diane & Tony Hofstede
 David & Stacey Hurrell
 John & Kathy* Junek
 The Kabat Family
 Christine Kucera Kalla & Mark Kalla
 Iris & Jay Kiedrowski
 Trisha Kirk & Sara J. Fenlason
 Dr. Tom Knabel & Kent Allin

John & Maureen Knapp
 Allen & Kathy Lenzmeier
 David & Diane Lilly
 Nancy & John Lindahl
 Ryan Long & Lindsay Strauss
 Audrey & Jim Lucas
 Maria McKean
 Jennifer Melin Miller & David Miller
 Jennifer & Brent Mohlenhoff
 Renee Montz
 David & Leni Moore
 Cindy & Jim Murphy
 Lynn & Anders Myhran
 Ann Rainhart & Jason Digman
 Bob Rosenbaum & Maggie Gilbert
 Derek R. Schoonbaert
 Lee & Peg Skold
 Anne & Michael Smith
 Sheila & Robert Stewart

Steven & Catherine R. Webster
 Justin & Jessica Weinberg
 Weiser Family Foundation
 on behalf of Irving & Marjorie Weiser
 Karen Zaun
 Todd & Kyoko Zaun

*In remembrance

AS OF AUGUST 31, 2024
 We do our best to ensure that all donor listings are current and correct. To update your listing, please contact us at 612.225.6200 or give@guthrietheater.org.



Skeleton Crew



English

Guthrie Staff

ARTISTIC

Artistic Director

Joseph Haj*

Executive Assistant to the Director

Alise Hansen

Senior Artistic Producer

Tracy Brigden*

Associate Producer

Addie Gorlin-Han

Director of Education and Professional Training

Maija Garcia

Professional Training Program Manager

Jeremy Jones

Education Program Manager

Lezlie Cross

Education and Professional Training Coordinator

Berto Borroto

Artistic Associate/

Resident Casting Director

Jennifer Liestman

Literary Manager and

Resident Dramaturg

Carla Steen

Director of Community Engagement

Amanda White

Community Engagement Associate

Blossom Johnson

DEVELOPMENT

Director of Development

Krista Mathews*

Campaign Director

Jennifer Baumgartner

Director of Strategic Partnerships

Rachael Crew

Senior Manager,

Foundation Relations

Liz Houlton

Director of Individual Giving

Sarah Stout Miller

Annual Fund Manager

Emily Pyle

Philanthropy Officer

Martine McLellan

Development Events Manager

Marge Pearson

Stewardship Events Manager

Sophie Bassat

Development Operations Manager

Greg Baker

Development Operations Specialist

Lana Aylesworth

MANAGEMENT

Managing Director

Trisha Kirk*

Assistant to the Managing Director

Jacob Hopson

General Manager

Diana A. Brown*

Company Manager/

General Management Associate

Carolyne Hall

Assistant Company Managers

Jessie Fanshaw

Lea Moore

Director of Finance

Janet E. Balej*

Accounting Manager

Kristin Ostebee

Accounts Payable Specialist

Andrew Buckholtz

Director of Human Resources

Autumn Amadou-Blegen*

Senior Human Resources Generalist

Judi Orland

Recruiter

Mat Peisert

Human Resources Systems and

Benefits Administrator

Ava Skrade

Director of Marketing and

Communications

Elizabeth Deacon*

Media Relations and

Partnerships Manager

J'Kalein Madison

Subscription Marketing Manager

Penelope Parsons-Lord

Tessitura Support Specialist

Chris Asp

Digital Marketing Manager

Joshua Cummins

Digital Marketing Associate

Bonnie Young

Videographer

Matt Melander

Associate Director of Marketing

Johanna Buch

Senior Graphic Designer

Brian Bressler

Graphic Designer

Sierra Ross

Writer and Editor

Christine Stevens

Marketing Associate

Allie McCurnin

Director of Ticketing

PattiJo Verdeja

Season Ticket and

Group Sales Manager

Kemi Ojelade

Box Office Manager

Trish Hruby

Box Office Supervisors

Cici Cancellieri

Abraham Swee

Dawn Tessmer

Box Office Lead

Abigail Schmidt

Senior Box Office Specialists

Davis Brinker

Matthew Everett

Alex Goebel

Marian Hughes

Jordan Muschler

Karen Prince

Steven Schroer

Ryn Van Wyhe

Becky Welandar

Box Office Specialists

Kate Anderson

Asa Benjamin

Mike Brown

Maddie Bryant

Caleb Byers

Laura Burdette

Zoe Champoux

Jo French

Kyle Kepulis

Ben Kockelman

Karen Kremer

Elle Miller

Lizzy Pouliot

Rachel Raisanen

Julia Sherbert

Court Symons
 Brian Thurn
 Brina Zappa
Director of Operations
 James D. Scott*
Event and Facility Sales Manager
 Olivia Smith
Director of Facilities
 Brian Oberholtzer
Building Engineer Manager
 Matthew A. Gilbertson
Building Engineers
 Michael Flaherty
 Luke Gerhardt
Facilities Assistant
 Austin Anderson
Environmental Services Manager
 Jerry Angulo
Environmental Services Assistant Manager
 Micah Nelson
Housekeepers
 Thaddeus Jameson
 María Luna
 Kyle Munshower
 Eve Muonio
 Eva Nereson
 Mio Ollin
 Benjamin Peña
 Wila Sadik
 Asia Wright
Director of Information Technology
 Bill Schneider
Database Administrator
 Chris Jensen
Information Technology Generalists
 Amy Van Patten
 Lee Vang
Director of Guest Operations
 Hunter Gullickson
Assistant Director of Guest Services
 Caitlin Childe-Archuleta
Lead Guest Services Associates
 Kevin Drew
 Julian Ibrahim
 Erin Sandell
Senior Guest Services Associate
 Cathy Hanson
Guest Services Associates
 Donna Cerkenik
 Claudia D'Auria
 Sydney Fors
 Gregg Gustafson
 Landon Kuhlmann
 Aine O'Donnell
 Em Rode
 Cristian Tenio
 Nijah Williams
Senior Guest Services and Retail Associate
 Lauren LaFond
Guest Services and Retail Associates
 Dan Forstner
 Toni Jefferson
 Louisa Schirmacher
 Esau Sponsler
 Alex Stevenson
 Diego Symouksavanh
Accessibility Coordinator
 Robyn DeCourcy
Lead Stage Door Attendant
 Hunter Goldsmith
Assistant Director of Public Safety
 Erin Boylan
Interim Public Safety Supervisor
 Joy Showalter
Public Safety Specialists
 Cedar Arcturus Loren
 Ryan Fritzke
 Monroe Hill Jr.
 Jack Nelson
 Jules Pivec
 Brandon Rodriguez

Jodi Stoffel
 Trevor Swedeen
 Kelly Walker
 Marc Zale
Director of Retail and Merchandising
 Kay McGuire
Lead Retail Associate
 Michael Gonzalez-Couture
Director of House Management
 Elton Turnage-Manuel
House Manager
 Katie Roland
House Supervisors
 Julie Cross
 Lindsay Higgins
Lead Ushers
 Jace Cruz
 Jason Litzinger
 Savannah Whisenhunt
Ushers
 Elliot Allen
 Audra Arnaudon
 Patricia Arnold
 Alaena Bohrsen
 Jon Bushee
 Jaina Carroll
 Emma Collins
 Pat Collins
 Renee Craig-Ethen
 Mary Kay Crawford-Lorfinck
 Constance Donnelly
 Dominique Duncan
 Alfredo Pástor Espín
 Frankie Eugenio
 Michael Franklin
 Patty Graham
 Rosanne Gronseth
 Karl Gustafson
 Abby Heil
 Baylie Heims
 Ella Hendrickson
 Ann Hite
 Alyssa Isaacson
 Kirk Jensen
 Mick Johnson
 Paula Klimek-Partch
 Aaron Kogle
 Alex Kouhi
 Brady Linderman
 Tim Lenz
 Patrick Mach
 Casey Marble
 Deborah Moore
 Nolan Murphy
 Anna Myers
 Sharon Peterson
 Sara Preus
 James Rubendall
 Danielle Shorty
 Foster Smith
 Pamela Sorenson
 Krista Steichen
 Emma Tonn
 Lisa Torrez
 James Velek
 Joani Werner
 Tristan Wilkes
 Damon Ziebarth
Kitchak Lounge Hosts
 Richard Giovino
 Isaiah Langowski
 Audrey Rankin

PRODUCTION
Director of Production
 Sarah Gullickson*
Interim Production Manager
 Kelly Claussen
Assistant Production Manager
 Sara L'Heureux
Production Stage Manager
 Karl Alphonso
Events Production Manager
 MJ Leffler

Technical Director
 Jonathan JollyStone
Associate Technical Director
 Jon Woelfer
Assistant Technical Director
 Liz Jovanovic
Scene Shop Coordinator
 Jesse Delaney
Production Carpenter
 Christopher Sibilia
Lead Carpenter
 Dalen O'Connell
Carpenters
 Will Bankhead
 Bridget Gustafson
 Jared Shofstall
Head of Scenic Art
 Heidi Larson
Lead Scenic Artists
 Lydia Francis
 Jeni Raddatz-Tolifson
Costume Director
 Amy Schmidt
Costume Workroom Manager
 T. Tyler Stumpf
Costume Design Assistant
 Jacourtney Mountain-Bluhm
Drapers/Tailors
 Juliann Benson
 dj gramann ii
 Annie Rupprecht
First Hands
 Denee Anderson
 Clare Brauch
 Mary Linda
Costume Craftsperson
 Vanessa J. Lopez
Stitchers
 Teresa Davich
 Dana Shepard
Wardrobe Assistants
 Deborah Murphy
 Meghan Otenbaker
Wig and Wardrobe Technicians
 Madison Blotz
 Molly Fox
 Jenny Gants-Moen
Head of Wigs, Hair and Makeup
 Jessica Rau

Production Wig, Hair and Makeup Artist
 Bee Tremmel
Wig Assistant
 Jamakah Webb
Head of Lighting and Projection
 Alice Trent
Production Electrician
 Megan Winter
Lead Light Board Operator
 Angelina Vyushkova
Light Board Operator
 Mary Shabatura
Lighting Department Associate
 Ellie Simonett
Head of Props
 Karin Rabe Vance
Prop Shop Coordinator
 Dan Fritsche
Production Props Artisan
 Jeff Harris
Props Shopper/Buyer
 Rebecca Jo Malmström
Props Artisan
 Erin Brandt
Production Sound Engineers
 Paul Estby
 Grace Heatherington-Tilka
Lead Sound Board Operator
 Brandon Smith
Sound Board Operator
 Matthew Koch
Sound Department Associate
 Katharine Horowitz
Head of Stage Operations
 Sam Diekman
Production Stagehands
 Matt Dawson
 Craig Rognholt
Lead Automation Operator
 Lillian Crawford
Props Liaison
 Jessica Kelley

AS OF APRIL 9, 2025

*Senior Management Team

OUR MISSION

The Guthrie Theater engages exceptional theater artists in the exploration of both classic and contemporary plays connecting the community we serve to one another and to the world. Through its extraordinary artists, staff and facility, the Guthrie is committed to the people of Minnesota and, from its place rooted deeply in the Twin Cities, influences the field as a leading 21st-century arts organization.

OUR VISION

The Guthrie creates transformative theater experiences that ignite the imagination, stir the heart, open the mind and build community through the illumination of our common humanity.

OUR CORE VALUES

Artistic Excellence

Community

Diversity, Equity, Inclusion and Accessibility

Fiscal Responsibility



818 South 2nd Street, Minneapolis, MN 55415
ADMINISTRATION 612.225.6000 BOX OFFICE 612.377.2224 or 1.877.447.8243 (toll-free)
guthrietheater.org • Joseph Haj, Artistic Director

PHOTOS: COVER: WILLIAM STURDIVANT, TYLER MICHAELS KING AND DAVID WHALEN IN *RICHARD II* (DAN NORMAN). PAGE 3: JOSEPH HAJ (T CHARLES ERICKSON). PAGE 5: LORI VEGA AND GRETCHEN EGOLF IN *DIAL M FOR MURDER* (DAN NORMAN). PAGE 6: THE CAST OF *FOR THE PEOPLE* (JAIDA GREY EAGLE); KALANI QUEYPO AND NATHANIEL TWOBEARNS IN *FOR THE PEOPLE* (JAIDA GREY EAGLE). PAGE 7: THE CAST OF *RICHARD II* (DAN NORMAN); WILLIAM STURDIVANT AND DANIEL JOSÉ MOLINA IN *HENRY IV* (DAN NORMAN); THE CAST OF *HENRY V* (DAN NORMAN). PAGE 8: TOM WALLACE. PAGE 9: TOM WALLACE; JOHANNA BUCH; BLOSSOM JOHNSON. PAGE 10: TREE O'HALLORAN (JOSHUA CUMMINS). PAGE 11: GUTHRIE ACTORS LAB (MAIJA GARCÍA). PAGE 12: GABRIELLE DOMINIQUE, VIE BOHEME, ERICA DURHAM, WILL ROLAND AND YVONNE FREESE IN *LITTLE SHOP OF HORRORS* (DAN NORMAN); VINE & DINE (MATT BLEWETT). PAGE 13: SUMMER CAMPS (DAN NORMAN). PAGE 14: HELEN CESPEDÉS, SALLY WINGERT, MICHAEL DOHERTY AND ADELIN PHELPS IN *THE IMPORTANCE OF BEING EARNEST* (DAN NORMAN). PAGE 18: ROBERT O. BERDAHL AND MAX WOJTANOWICZ IN *'ART'* (DAN NORMAN). PAGE 23: STEPHANIE EVERETT AND MIKELL SAPP IN *SKELETON CREW* (DAN NORMAN). PAGE 24: NIKKI MASSOUD AND ROXANNA HOPE RADJA IN *ENGLISH* (LIZ LAUREN).