



GUTHRIE
THEATER

SOCIAL NARRATIVE

Getting to the Guthrie



Buying Tickets

I can buy tickets for all Guthrie shows online at guthrietheater.org, by phone at 612.377.2224 or in person at the Box Office.

If I want to attend a relaxed performance, I can find show dates and buy tickets at guthrietheater.org/relaxed.



Wearing a Mask

To stay as safe as possible while I'm at the Guthrie, I can wear a face mask that completely covers my mouth and nose. Masks are recommended but not required inside the theater during relaxed performances. This mask will help prevent the spread of germs by blocking the fluid droplets from my nose and mouth from entering the air around me.

I should bring my own mask to wear. You may request a disposable mask at one of the Guest Services Desks on Levels One, Four or Five. However, we cannot guarantee that masks will be available.

I can call the Box Office at 612.377.2224 to learn more about the Guthrie's health and safety policies. I can also review the Health and Safety: Masks social narrative for more details.



Wurtele Thrust Stage



McGuire Proscenium Stage

Seeing My Seats (optional)

I can schedule a visit to the Guthrie before a performance by emailing Guest Services at guestservices@guthrietheater.org.

During this visit, I can see where my seat is located, take a tour of the building and ask any questions I have.



On-Street Parking

If I travel to the Guthrie by car, I can park at a street meter and pay by the hour. Pay stations are located on the street and accept dollar coins or debit/credit cards. Most street meters by the Guthrie have a two-hour maximum parking time.

I can also use the [MPLS Parking app](#) to pay for metered parking and/or add more time to my parking meter.

If I have disability license plates or a disability parking placard, I can park at a street meter for up to four hours free of charge.



Ramp Entrance

Ramp Parking

I can also park at the Riverfront Ramp across the street from the Guthrie. The Guthrie event parking rate is \$15. There will be signs posted outside the ramp entrances on South 2nd Street and 9th Avenue South when the Guthrie event rate is in effect.

If I want to park in the Riverfront Ramp during this time, I will need to use a credit card to pre-pay the \$15 fee. When I enter the ramp, I will follow the instructions on the kiosk to pre-pay and receive my parking ticket. The barrier arm will lift to allow me to drive inside after I take my ticket.

I will take my ticket inside with me and keep it in a safe place. I will need it to get back inside the ramp by scanning it at one of the pedestrian entrances on South 2nd Street or 9th Avenue South.

I will use my parking ticket to exit the ramp by inserting it at the kiosk and waiting for the barrier arm to lift to allow me to drive out. If the barrier arm is already lifted, I can simply drive out of the ramp.



Public Transit

I can travel to the Guthrie by taking the [Green](#) or [Blue](#) light rail lines to the U.S. Bank Stadium stop. From there, I can walk north (toward the Mississippi River) on Chicago Avenue until I reach South 2nd Street. The Guthrie will be across the street and to my right.

I can also schedule a ride with [Metro Mobility](#) or take a fixed-route bus with [Metro Transit](#). There are several bus routes with stops near the Guthrie. I can plan my trip [online](#).



Entering the Building: Main Entrance

I can enter the Guthrie through four different entrances.

I can enter through the main entrance that faces South 2nd Street. This is the busiest entrance, so I may hear loud noises or encounter crowds of people.

This is one of two easily accessible entrances for wheelchair users, as there are curb cuts from the street to the area in front of the doors. The doors furthest to the right have automated entry buttons I can push to open the doors.

If I walk through the main entrance doors, I will see and hear escalators on my left and right. I can ride an escalator up to Level Four.

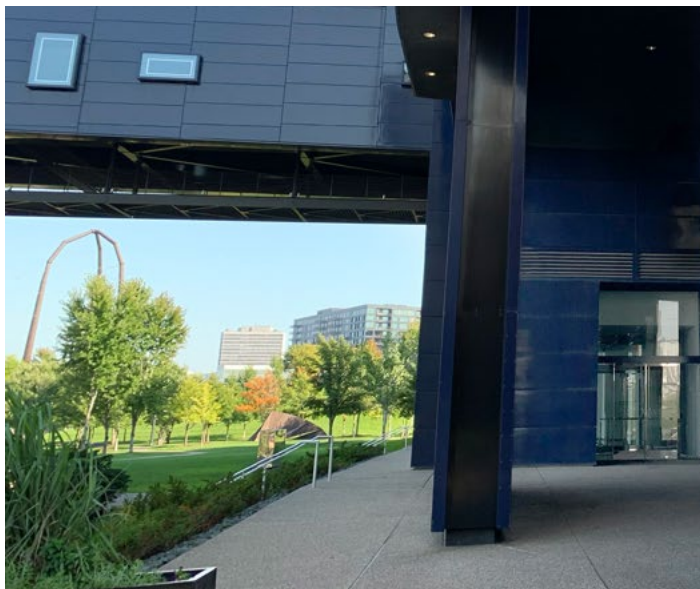
There are also two elevators on my left near the Guthrie Store that I can take to Level Four or Five.



Entering the Building: Front Side Entrance

I can enter the Guthrie through the front side entrance near the Guthrie Store. This entrance should be quieter and less crowded than the main entrance. It is also the closest entrance to the elevators that I can take to Level Four or Level Five.

This is the other easily accessible entrance for wheelchair users. The doors on the left have automated entry buttons I can push to open the doors.



Back Side Entrance



Back Entrance

Entering the Building: Back Entrances

I can also enter the Guthrie through one of two back entrances near West River Parkway. I will have to climb a short set of stairs to reach these doors from street level. There are no ramps or curb cuts near these doors.

Once I enter the building, I can walk toward the main entrance to find the escalators and public elevators. I can ask a Guthrie staff member or volunteer to help me find my way. Guthrie staff can also show me where to find staircases that lead to Level Four or Level Five if I want to take the stairs.



Building Map

I can look at a building map of the Guthrie to choose which entrance to use and plan my route.

I can also pick up a map at the Guest Services Desks on Level One, Level Four and Level Five on the day of the performance.

Questions?

Call the Box Office at 612.377.2224 or 1.877.447.8243 (toll-free),
email Guest Services at guestservices@guthrietheater.org
or visit guthrietheater.org/relaxed.