



GUTHRIE
THEATER



Louisa May Alcott's **Little Women**

2025–2026 Season / April 18 – June 21, 2026 / Wurtele Thrust Stage

MINNESOTA ORCHESTRA

Chris Thile at Orchestra Hall

Devilishly dexterous and eclectic, Grammy® Award-winning mandolinist, singer, songwriter and composer Chris Thile is at home in every genre—from bluegrass to Baroque to jazz to indie pop.

Chris Thile with the Minnesota Orchestra

FRI JUL 31 8PM

SAT AUG 1 7PM

Part narrative song cycle, part musical self-portrait, Chris Thile's playfully bold autobiographical work for mandolinist and orchestra *ATTENTION!* blends virtuosity, humor and storytelling.

Chris Thile and Friends*

SUN AUG 2 7PM

Thile and a crew of his closest musical compatriots and collaborators grace the Orchestra Hall stage for a one-night-only performance.

*The Minnesota Orchestra does not perform on this program.



**DON'T MISS THESE SURE-TO-SELL-
OUT CONCERTS THIS SUMMER!**
GET YOUR TICKETS NOW.

CATCH THE FULL LINEUP AT
[MINNESOTAORCHESTRA.ORG/SUMMER](https://www.minnesotaorchestra.org/summer)

612-371-5656 |    #MINNORCH





GUTHRIE THEATER

818 South 2nd Street
Minneapolis, MN 55415
guthrietheater.org
Joseph Haj, Artistic Director

ADMINISTRATION
612.225.6000

BOX OFFICE
612.377.2224 or
1.877.447.8243 (toll-free)

LAND ACKNOWLEDGMENT
The Guthrie would like to acknowledge that we gather on the traditional land of the Dakota People and honor with gratitude the land itself and the people who have stewarded it throughout the generations, including the Ojibwe and other Indigenous nations.

Guthrie Theater Program

Volume 63, Issue 8
Copyright 2026

EDITORS
Johanna Buch
Christine Stevens

GRAPHIC DESIGNER
Brian Bressler

CONTRIBUTORS
Paul Auguston
Edie French
Jackson Gay
Lauren M. Gunderson
Joseph Haj
Wendy Weckwerth

The Guthrie program is published by the Guthrie Theater. To advertise in the program, email guthrie@guthrietheater.org.



GUTHRIE SNAPSHOT

Actor Meghan Kreidler poses with a young patron after the *Macbeth* Shakespeare Classic in March.

PHOTO: TOM WALLACE

Inside

■ WELCOME

From Artistic Director Joseph Haj • 5

■ LOUISA MAY ALCOTT'S LITTLE WOMEN

Creative Team, Cast and Biographies • 8

■ PLAY FEATURES

Character Map • 20

Little Women: A Lasting Mirror • 22

An Interview With Lauren M. Gunderson • 24

■ SUPPORTERS

Donor Spotlight • 27

Corporate, Foundation and Public Support • 28

2025-2026 Season Sponsors • 30

Annual Fund Contributors • 30

■ WHO WE ARE

Board of Directors and Guthrie Staff • 34



Come to where our nation's history shines bright.



Split Rock Lighthouse
Two Harbors



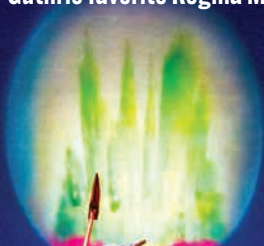
Visit historic sites and museums across the state.
mnhs.info/mn250history



THE WIZARD OF OZ

April 21-June 14

The iconic original, *dazzlingly* reimagined—featuring Guthrie favorite Regina Marie Williams as the Tin Man.



Tickets at childrenstheatre.org/oz or 612.874.0400



From Artistic
Director
Joseph Haj

Dear Friends,

Few works have endured in American literature quite like *Little Women*. Ever since Louisa May Alcott first introduced us to the March sisters in 1868, their story of resilience and familial ties has been cherished by each new generation. The ache of growing up, the question of who we want to be and the love that binds us together are timeless facets of human life. The story is modest in its details but monumental in its impact on readers of all ages.

Lauren M. Gunderson's stage adaptation of Alcott's beloved tale is truly remarkable. She brings a dramatist's precision and a genuine tenderness to the script, honoring the spirit of the novel while giving it a full, breathing life onstage. At the center of it all is Jo — restless, passionate and utterly determined — whose hunger to tell stories mirrors the very impulse that brought Alcott to her writing desk.

The Guthrie has long been drawn to stories about families navigating change, whether through invisible negotiations, sacrifices both small and large, or door-slamming eruptions. This production follows strongly in that tradition. I'm grateful to have the brilliant director Jackson Gay at the helm with an extraordinary cast and creative team who bring fresh perspectives to Alcott's world. We hope the dreams of each March sister resonate as deeply with you as they have with all of us.

Enjoy the show!





GUTHRIE
THEATER

Subscribe today!

612.225.6238 / guthrietheater.org



made to
move you

When we choose to experience theater together, something remarkable happens: Hope breaks through and propels us forward. This season is made to move you in big and small ways, and we can't wait to experience it together. New subscription packages are on sale now at guthrietheater.org/subscribe.

Waiting for Godot

A profound exploration of humanity
September 12 – October 11, 2026

The Guthrie Theater presents
the Octopus Theatricals production of

Kunene and the King

A powerful story of connection
October 10 – November 8, 2026

Priority Ordering Opportunity for Subscribers

A Christmas Carol

A heartwarming holiday classic
November 11 – December 27, 2026

And Then There Were None

A masterpiece of suspense
December 12, 2026 – February 21, 2027

Intimate Apparel

A moving portrait of resilience
January 23 – February 28, 2027

John Proctor Is the Villain

A fearless new play
March 13 – April 25, 2027

A Tale of Two Cities

A world-premiere adaptation
April 3 – May 23, 2027

Eureka Day

An uproarious satirical comedy
May 15 – June 18, 2027

The Pirates of Penzance

A swashbuckling musical delight
June 19 – August 22, 2027

SEASON
SPONSORS



This activity is made possible by the voters of Minnesota through a Minnesota State Arts Board Operating Support grant, thanks to a legislative appropriation from the arts and cultural heritage fund.



David & Janis Larson
Foundation



CENTRAL MINNESOTA'S LIVE ENTERTAINMENT HOTSPOT



UPCOMING EVENTS

MICHAEL SHYNES
PARAMOUNT CENTER FOR THE ARTS



Visit Greater ST. CLOUD

LINDSEY STIRLING,

BLUES TRAVELER AND GIN BLOSSOMS WITH SPIN DOCTORS,

JOHN MULANEY WITH VERY SPECIAL GUEST,

JAY AND THE AMERICANS,

GLENN MILLER ORCHESTRA,

WILD IN THE STREETS - A TRIBUTE TO BON JOVI,

THE DEAD COWBOYS,

...AND MORE!

A CHORUS LINE

FEATURING THE
1975
ORIGINAL CHOREOGRAPHY
ON STAGE †
MAY 15 - JUNE 14, 2026

50 YEARS PARK SQUARE THEATRE
A SEASON OF CELEBRATION

NOW- SEPTEMBER 26!

GUYS & DOLLS

A MUSICAL FABLE OF BROADWAY

Opening October 2026!

Annie

The world's best-loved musical returns!

entertaining you!
Chanhassen DINNER THEATRES

952.934.1525
ChanhassenDT.com

Louisa May Alcott's Little Women

adapted by Lauren M. Gunderson
from the novel by Louisa May Alcott
directed by Jackson Gay

CREATIVE TEAM

SCENIC DESIGNER	Junghyun Georgia Lee
COSTUME DESIGNER	Jessica Ford
LIGHTING DESIGNER	Paul Whitaker
SOUND DESIGNER/COMPOSER	Matthew M. Nielson
DRAMATURG	Wendy Weckwerth
RESIDENT VOCAL COACH	Keely Wolter
MOVEMENT COORDINATOR	Joey Miller
FIGHT DIRECTOR/INTIMACY BY	Annie Enneking
RESIDENT CASTING DIRECTOR	Jennifer Liestman, C.S.A.
STAGE MANAGER	Lori Lundquist*
ASSISTANT STAGE MANAGER	Jaya Robillard*
ASSISTANT DIRECTOR	Jacey Little
FIGHT CAPTAIN	Daniel Petzold*

Acknowledgments

Louisa May Alcott's Little Women was commissioned and originally produced by City Theatre, Pittsburgh, PA; Northlight Theatre, Chicago, IL; People's Light, Malvern, PA; and TheatreWorks, Palo Alto, CA.

Louisa May Alcott's Little Women is produced by special arrangement with The Gersh Agency, 9465 Wilshire Blvd., Suite 600, Beverly Hills, CA 90212.

SPONSORED BY



CAST

in order of appearance

LOUISA/JO	Isabella Star LaBlanc*
MEG	Stephanie Anne Bertumen*
AMY	Audrey Parker*
BETH	May Heinecke
MARMEE	George Keller*
LAURIE	Daniel Petzold*
JOHN	Logan Lang
MR. MARCH	Bill McCallum*
AUNT MARCH	George Keller*
FRIEDRICH	Joe Bigelow*
MR. LAURENCE	Bill McCallum*

Understudies

Understudies never substitute for performers unless announced prior to the performance.

Dustin Bronson* (Laurie/John); John Catron* (Mr. March/Friedrich/Mr. Laurence);

Isa Condo-Olvera (Amy/Beth); Liv Kemp (Louisa/Jo/Meg);

Mo Perry* (Marmee/Aunt March)

*Member of Actors' Equity Association

SETTING

The action of the play begins during the American Civil War and takes place in Concord, Massachusetts, and New York City.

This production will be performed with one intermission.

SPECIAL THANKS

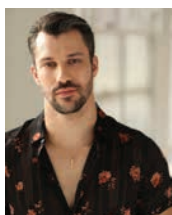
The Guthrie gratefully recognizes Kristen Ludgate & Grant Booth, Susan Kinder & David Vealitzek and The Jan Willette Family as Producers; and Kelly Brooks & Ari Wolfe, Roma Calatayud-Stocks & Thomas Stocks, M.D., David & Stacey Hurrell, Iris & Jay Kiedrowski, Helen M. Meyer and Tom & Nancy Willette as Associate Producers.

BIOGRAPHIES

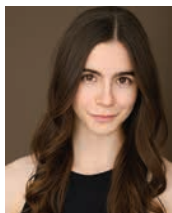
Cast



Stephanie Anne Bertumen (Meg) **GUTHRIE** *A Christmas Carol, Cabaret, The History Plays*. **THEATER** Ten Thousand Things: *The Winter's Tale*; Ordway: *Annie, Jesus Christ Superstar*; Theater Latté Da: *Bernarda Alba*; Jungle Theater: *The Courtroom*; Frank Theatre: *Sanctuary City*; History Theatre: *Secret Warriors, Complicated Fun, The Debutante's Ball*; Theater Mu: *Charles Francis Chan Jr.'s Exotic Oriental Murder Mystery* (Dowling Studio), *Twelfth Night*; Theater Mu/Park Square Theatre: *Flower Drum Song*; CTC; The Old Globe. **CHOREOGRAPHY** History Theatre; Artistry; University of Minnesota. **AWARDS** Twin Cities Theater Bloggers Favorite Choreographer 2023. **TRAINING** University of Minnesota/Guthrie Theater B.F.A. Acting Program



Joe Bigelow (Friedrich) **GUTHRIE** *Cabaret, A Midsummer Night's Dream* (2015), *My Fair Lady, Roman Holiday, H.M.S. Pinafore*. **THEATER** International Tour: *West Side Story*; The Mundy: *Chicago*; Paper Mill Playhouse: *Beauty and the Beast*; Maltz Jupiter Theatre: *Chicago*; Marriott Theatre: *Holiday Inn, Sweet Charity*; Peterborough Players: *She Loves Me, The Drowsy Chaperone*; Florida Repertory Theatre: *Too Marvelous for Words*; Luna Stage: *Thrill Me*; The Moving Company: *An American in Paris* (MacPhail Spotlight Series); Hope Summer Repertory Theatre: *All Shook Up, The Light in the Piazza*; Black Dirt Theater: *Arsenic and Old Lace*. **TRAINING** University of Minnesota/Guthrie Theater B.F.A. Actor Training Program



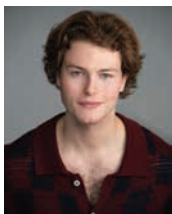
May Heinecke (Beth) **GUTHRIE** Debut. **THEATER** Lyric Arts: *Peter and the Starcatcher*; Open Eye Theatre: *Loch Ness*; Athenaeum Theatre: *Constellations*; Theatre Pro Rata: *No Sisters*; Phoenix Theater: *Brewed*. **TRAINING** University of Minnesota/Guthrie Theater B.F.A. Acting Program. @mayheinecke (IG)



George Keller (Marmee/Aunt March) **GUTHRIE** *A Doll's House, Dollhouse*. **THEATER** Ten Thousand Things: *Men on Boats, Emilia, Helen*; Sod House Theatre: *Five More Minutes*; Trinity Rep/Penumbra Theatre: *Grandchildren of the Buffalo Soldiers, Wedding Band*; Mixed Blood: *Messy Utopia, Red Ink*; Hey City Theater: *Tony n' Tina's Wedding*; CTC: *Sneetches, According to Coyote, Average Family, The Lion, the Witch and the Wardrobe*; Brave New Workshop; Disney Magic: *Improv Comedy*. **FILM/TELEVISION** *Clear* (Running Water Entertainment), *Lady Dynamite* (Netflix), *Into Temptation*, Disney's *Halloweentown, A Change of Heart* (Lifetime), Stephen King's *Rose Red*. **TEACHING** Interact Center; Jewish Community Center; Theater Latté Da's City Stock. **TRAINING** American Academy of Dramatic Arts



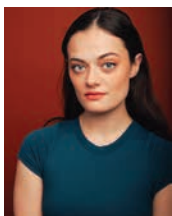
Isabella Star LaBlanc Sisseton Wahpeton Dakota (Louisa/Jo) **GUTHRIE** Debut. **THEATER** STC: *Peter Pan and Wendy*; Cincinnati Shakespeare Company: *August: Osage County*; Jungle Theater: *The Wolves, Little Women*; CTC: *Peter Pan*; Mixed Blood: *Autonomy*. **FILM/TELEVISION** *True Detective: Night Country* (HBO), *Dexter: Resurrection* (Paramount+), *Long Slow Exhale* (Spectrum Originals), *Pet Sematary: Bloodlines* (Paramount+). **AUDIO** 20+ titles, including *Firekeeper's Daughter*, *The Angel of Indian Lake* and the Cash Blackbear series. **AWARDS** Princess Grace Award Honoraria; Yale University Misty Upham Award; Principal cast in *True Detective: Night Country* (Emmy, Golden Globe and Critics Choice Award nominations for Best Limited Series). @isabellalablanc (IG)



Logan Lang (John) **GUTHRIE** Debut. **THEATER** Regional (selected): CTC: *Treasure Island*; The Modern Rep: *Salome*; Park Square Theatre: *Goosebumps: Phantom of the Auditorium*; Walking Shadow Theatre Company: *Red Speedo*; Frosted Glass Creative: *Romeo and Juliet, Much Ado About Nothing*. **TRAINING** University of Minnesota/Guthrie Theater B.F.A. Acting Program. @loganlang (IG), logan-lang.com



Bill McCallum (Mr. March/Mr. Laurence) **GUTHRIE** 60+ productions since 1996; Favorites include *The History Plays, A Doll's House* (US), *The Tempest, The Crucible, Clybourne Park, Time Stands Still, God of Carnage, Circle Mirror Transformation, The Glass Menagerie, Death of a Salesman, Othello, Three Sisters, The Cherry Orchard* and *Who's Afraid of Virginia Woolf?* **THEATER** Cincinnati Playhouse in the Park; Goodman Theatre; Northlight Theatre; American Players Theatre (seven seasons); Penumbra Theatre; History Theatre; Park Square Theatre; Illusion Theatre; Yellow Tree Theatre. **FILM/TELEVISION** David Lynch's *The Straight Story, Wilson* (with Woody Harrelson), *Joe Somebody* (with Tim Allen), *20/20: In an Instant* (ABC). **TRAINING** UNC School of the Arts. @willimac3 (IG)



Audrey Parker (Amy) **GUTHRIE** Debut. **THEATER** Chanhassen Dinner Theatres: *Grease*; Artistry: Disney's *Newsies, Some Enchanted Evening*; History Theatre: *Blended* 和 (*Harmony*): *The Kim Loo Sisters, Teen Idol: The Bobby Vee Story*; Sidekick Theatre: *Incident at Our Lady of Perpetual Help*. **FILM/TELEVISION** *Dead Media, The Killer Next Door* (Fox Nation). @audrey.e.parker (IG)



Daniel Petzold (Laurie) **GUTHRIE** *Macbeth, A Christmas Carol, The Importance of Being Earnest, Hamlet, Sally & Tom*. **THEATER** Off-Broadway: The Public: *Sally & Tom*; 59E59 Theaters: *Switzerland*; the american vicarious: *Pushkin*; Regional (selected): The Old Globe: *The Comedy of Errors, Appropriate, Macbeth, Twelfth Night, Love's Labour's Lost*; Park Square: *It's Only a Play, Holmes/Poirot, Airness, Holmes and Watson*; Florida Studio Theatre; Cincinnati Playhouse in the Park; Berkeley Rep; Aurora Theatre; Magic Theatre; Shotgun Players; San Francisco Shakespeare Festival. **FILM/TELEVISION** *FBI* (CBS). **TRAINING** M.F.A., The Old Globe/University of San Diego; B.A., University of California, Berkeley. @_danielpetzold (IG)



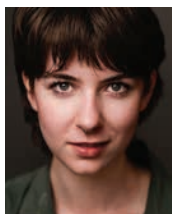
Dustin Bronson (US: Laurie/John) **GUTHRIE** *A Midsummer Night's Dream, The History Plays, Hamlet, To Kill a Mockingbird, Juno and the Paycock. THEATER* Latté Da: *The Glass Menagerie*; Mixed Blood: *Pussy Valley, The Song of Summer, Hir*; Jungle: *The Courtroom, Georgiana & Kitty*; Christmas at Pemberley; Yellow Tree: *Misery*; Artistry: *Love and Baseball*; Gremlin: *A Steady Rain*; Park Square: *Of Mice and Men, A Midsummer Night's Dream*; Illusion: *My Antonia, Autistic License*; TheatreWorks: *American Prom*; Creede Repertory Theatre: *Hazardous Materials, Pride and Prejudice, Little Shop of Horrors, Barefoot in the Park, Miss Holmes. FILM/TELEVISION* *I Was There* (History Channel). **TRAINING** University of Minnesota/Guthrie Theater B.F.A. Acting Program. **UPCOMING** Guthrie: *Private Lives*. @dustinbronson (IG)



John Catron (US: Mr. March/Friedrich/Mr. Laurence) **GUTHRIE** More than 30 productions, including *Macbeth, A Midsummer Night's Dream, The History Plays, Hamlet, A Christmas Carol, Romeo and Juliet, Sense and Sensibility, Trouble in Mind, The Crucible, Othello, Uncle Vanya, Long Day's Journey Into Night* and *Hay Fever. THEATER* Pillsbury House + Theatre (Artistic Associate); Jungle Theater; Frank Theatre; Park Square; Theater Latté Da; Illusion Theater; Torch Theater; Dark & Stormy Productions; TigerLion Arts; Theater Mu; STC; Actors Theatre of Louisville. **AWARDS** Ivey Award for Best Ensemble; 2014 *City Pages* Best Actor. **TRAINING** Grinnell College; St. Petersburg State Theatre Arts Academy; National Theater Institute. @jhnctrn (IG), johncatron.com



Isa Condo-Olvera (US: Amy/Beth) **GUTHRIE** *A Christmas Carol, The Tempest* (US). **THEATER** Theater Latté Da: *Passion, Cinderella, Journey On, The Glass Menagerie*; Frank Theatre: *The Welkin*; Ten Thousand Things: *Iphigenia at Aulis*; Exposed Brick: *Quinceañera*; An Opera Theatre: *Divas & Drag, The Cradle Will Rock, Dido and Aeneas*; Milwaukee Chamber Theatre: *Laughs in Spanish*; Illinois Shakespeare Festival: *The Book of Will, The Tempest, The Comedy of Errors. DIALECT COACHING* Mixed Blood: *The Jungle*; Ten Thousand Things: *The Most Happy Fella*; Guthrie: *Somewhere* (Spanish dialects), *A Christmas Carol* (Assistant). **TEACHING** CTC; Guthrie Theater. **TRAINING** University of Minnesota/Guthrie Theater B.F.A. Acting Program. @isacondoolvera (IG), isacondoolvera.com



Liv Kemp (US: Louisa/Jo/Meg) **GUTHRIE** *A Christmas Carol* (US). **THEATER** Ten Thousand Things: *Helen*; History Theatre: *I Am Betty* (2023, 2024); Yellow Tree Theatre: *Toil and Trouble*; Theater Latté Da: *Fun Home*; Theatre Novi Most: *An Ocean Away*; The Birth Play Project: *Aquelarres. TEACHING* Guthrie Theater; Yellow Tree Theatre; University of Minnesota. **TRAINING** University of Minnesota/Guthrie Theater B.F.A. Acting Program; Interlochen Arts Academy. @kempolivia (IG), livkemp.com



Mo Perry (US: Marmee/Aunt March) **GUTHRIE** *The Mousetrap, An Enemy of the People, The Royal Family, The Heidi Chronicles*. **THEATER** Ten Thousand Things: *A Midsummer Night's Dream, The Winter's Tale, Emilia, Twelfth Night*; Jungle Theater: *The Nether, The Two Gentlemen of Verona*; Park Square: *Romeo and Juliet, Behind the Eye, Or, Othello, The Last Seder*; CTC: *Alice in Wonderland, Babe, the Sheep Pig, Mercy Watson to the Rescue!*; Mixed Blood: *Crashing the Party, Somebody/Nobody*; Torch Theater: *Boeing-Boeing, Prints, Dangerous Liaisons, Macbeth*. **AWARDS** 2010 *City Pages* Best Actress; 2017 *Lavender* Outstanding Lead Actress; 2017 Twin Cities Theater Bloggers Best Dramatic Performance. **TRAINING** The University of Kansas

Creative Team



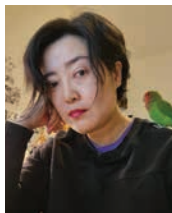
Louisa May Alcott (Author) **GUTHRIE** Debut. **ABOUT** Alcott is best known for her novel *Little Women* and its sequels, *Little Men* and *Jo's Boys*. Born in Germantown, Pennsylvania, in 1832, Alcott and her three sisters spent their childhood in Concord and Boston, Massachusetts. Her career as an author began with submissions to popular magazines of poetry and short stories. *Little Women* began as a request from her publisher to write a book for girls. Based on Alcott's life with her sisters, *Little Women* features principal protagonist Jo March, who is considered to be the first realistic American heroine. Alcott published more than 200 literary works in many genres that have been translated into over 54 languages.



Lauren M. Gunderson (Adapter) **GUTHRIE** Debut. **ABOUT** Gunderson is currently the most-produced playwright in America since 2015, topping the list four times, including this year. She is a two-time winner of the Steinberg/ATCA New Play Award for *I and You* and *The Book of Will*; the winner of the William Inge Distinguished Achievement in Theatre Award and the Lanford Wilson Award; and a finalist for the Susan Smith Blackburn Prize. *Revolutionary Women*, her new anthology of five plays, is published by Bloomsbury along with *I and You, The Catastrophist* and *anthropology*. She co-authored the Miss Bennet trilogy with Margot Melcon. *The Half-Life of Marie Curie* was commissioned by Audible Theater, premiered Off-Broadway and can be heard at audible.com. Learn more at laurengunderson.com.



Jackson Gay (Director) **GUTHRIE** Debut. **THEATER** Selected: Bucks County Playhouse: Nashville-inspired new musical *Hard Road to Heaven*; REP: *King Lear*; Juilliard: *Hedda Gabler*; Berkeley Rep/Goodman Theatre: Christina Anderson's *the ripple, the wave that carried me home*; Yale Rep/Geffen Playhouse/Atlantic: Rolin Jones' *These Paper Bullets!*; MCC: Lucy Thurber's *Transfers*; Atlantic/Yale Rep: Obie-winning *The Intelligent Design of Jenny Chow*. **OTHER** Director of Artistic Programs, Fuller Road Artist Residency (Vermont); Co-Artistic Director, New Neighborhood (first 24-hour reading of the Mueller Report; interactive sound installation *Endless Loop of Gratitude*). **UPCOMING** Hartford Stage: Morgan Lloyd Malcolm's *Dracula*. **TEACHING** Directing faculty, Brooklyn College. **TRAINING** Yale School of Drama. jacksongracegay.com



Junghyun Georgia Lee (Scenic Designer) **GUTHRIE** *The Heart Sellers, As You Like It, Sense and Sensibility*. **THEATER** The Public; NYTW; Atlantic; Audible Theater; The Play Company; Ma-Yi Theater Company; CTC; The Huntington; PlayMakers Repertory Company; The Juilliard School; Indiana Repertory Theatre. **TEACHING** Faculty at Amherst College, MA. **AWARDS** Nominations: Drama Desk, Henry Hewes, Elliot Norton, Connecticut Critics Circle. **TRAINING** M.F.A., Yale School of Drama. @jgldesigncompany (IG), junghyungeorgialeedesign.com



Jessica Ford (Costume Designer) **GUTHRIE** Debut. **THEATER** Arena Stage: *Kleptocracy, The Fantasticks*; Atlantic/Geffen Playhouse/Yale Rep: *These Paper Bullets!*; Alley Theatre: *Amerikin, The Cake, Lover, Beloved, Other Desert Cities, Red*; South Coast Repertory: *Little Shop of Horrors, Nina Simone: Four Women*. **FILM/TELEVISION** Selected (ACD/Buyer/Fitter): *Life, Larry and the Pursuit of Unhappiness, One Attempt Remaining, New Years Rev, Bosch: Legacy, Horizon: An American Saga, Swarm, Gaslit*. **AWARDS** LA and CT Critics Circle Awards; Sage Award; Nominations: Ovation, Drama Desk. **TEACHING** Yale University; Mount Holyoke College; UMass Amherst; MICA. **TRAINING** M.F.A., Yale School of Drama. @icon_sandwich (IG), jessicafordcostumedesign.com



Paul Whitaker (Lighting Designer) **GUTHRIE** *The Great Leap, Other Desert Cities*. **THEATER** New York: The Public; Playwrights Horizons; Second Stage Theater; Atlantic; Primary Stages; MCC Theater; The Play Company; Ma-Yi Theater Company; LAByrnth Theater Company; Regional (selected): La Jolla Playhouse; South Coast Repertory; Long Wharf Theatre; Alley Theatre; The Huntington; CTC; CenterStage Theatre Company; American Conservatory Theater; Hartford Stage; Yale Rep; Dallas Theater Center; Theater Latté Da. **OPERA** MN Opera; San Diego Opera; Lyric Opera of Kansas City; OPERA San Antonio. **OTHER** Partner at Schuler Shook, a theater planning and architectural lighting firm. **TRAINING** M.F.A., Yale School of Drama. @paul.p.whitaker (IG), schulershook.com



Matthew M. Nielson (Sound Designer/Composer) **GUTHRIE** *Shane*. **THEATER** Off-Broadway: The Public/NYSF; Lincoln Center Theater; 59E59 Theaters; Regional: Oregon Shakespeare Festival; Cincinnati Playhouse in the Park; Denver Center; Portland Center Stage; Milwaukee Rep; Repertory Theatre of St. Louis; Actors Theatre of Louisville; Arena Stage; Ford's Theatre; Kennedy Center; Signature Theatre; Barrington Stage Company; Round House Theatre; Woolly Mammoth; Studio Theatre; Theater Alliance; Oliney Theatre Center; Contemporary American Theater Festival. **FILM/TELEVISION** *Death in Time, Elbow Grease, From Hell to Here*; Discovery; Netflix; Epix Drive-In. **AUDIO** *Troublesome Gap*. **AWARDS** Helen Hayes; Regional and film festival awards. matthewnielson.com



Wendy Weckwerth (Dramaturg) **GUTHRIE** Debut. **DRAMATURGY** Local: Playwrights' Center; Theater Latté Da; History Theatre; Pillsbury House + Theatre; Theatre Novi Most; Six Points Theater; National: Colorado New Play Festival; The Huntington; New York Theatre Workshop; P.S. 122; Rivendell Theatre; Yale Rep; Voice & Vision. **TRANSLATIONS** Yale Rep: Bergman's *Autumn Sonata*; August Strindberg Rep: Strindberg's *Kristina*. **AWARDS** McKnight Theater Artist Fellowship, Playwrights' Center; Hedgebrook Writing Residency; Jerome Foundation Residency, Tofte Lake Center. **TRAINING** M.F.A., D.F.A., Yale School of Drama; B.A., Vassar. wendyweckwerth.com



Keely Wolter (Resident Vocal Coach) **GUTHRIE** Over 25 productions, including *Sleuth*, *Macbeth*, *Somewhere*, *Primary Trust*, *A Doll's House*, *Cabaret*, *A Midsummer Night's Dream*, *The Heart Sellers*, *The Lehman Trilogy*, *Little Shop of Horrors*, *The Importance of Being Earnest*, *Vietgone* and *Noura*. **THEATER** Theater Latté Da: *Chicago*, *Hedwig and the Angry Inch*, *Five Points*, *Assassins*, *Man of La Mancha*, *Six Degrees of Separation*, *Peter and the Starcatcher*, *Ragtime*, *Lullaby*, *Sweeney Todd*, *All Is Calm*; Jungle Theater: *Georgiana & Kitty: Christmas at Pemberley*, *The Wickhams*, *Miss Bennet*, *Lone Star Spirits*, *Le Switch*, *Constellations*; Penumbra Theatre: *benevolence*, *Wedding Band*; MN Opera: *The Fix*. **TRAINING** Royal Central School of Speech and Drama; Viterbo University



Joey Miller (Movement Coordinator) **GUTHRIE** *Primary Trust*, *Cabaret*, *Little Shop of Horrors*. **THEATER** Regional: Chanhassen Dinner Theatres: *The Prom*, *Footloose*, *Mamma Mia!*, *Holiday Inn*, *Newsies*, *Beauty and the Beast*; Artistry: *Songs for a New World*; Theater Latté Da: *Chicago*; Orday: *West Side Story*, *A Chorus Line*, *White Christmas*, *The Pirates of Penzance*, *Damn Yankees*. **DIRECTING/CHOREOGRAPHY** History Theatre: *Whoa, Nellie!*, *The Boy Wonder*; Theater Latté Da: *Fun Home*; Theatre L'Homme Dieu: *Beautiful: The Carole King Musical*; Chanhassen Dinner Theatres: *The Prom*; Old Log Theatre: *A Gentleman's Guide...*; Artistry: *RENT*, *Shrek the Musical*. **TRAINING** B.F.A., Musical Theatre, Viterbo University; Massage Therapy, CenterPoint Massage & Shiatsu. jdmbodywork.com



Annie Enneking (Fight Director/Intimacy) **GUTHRIE** *Sleuth*, *Macbeth*, *Somewhere*, *A Doll's House*, *Cabaret*, *A Midsummer Night's Dream*, *Skeleton Crew*, *The History Plays*, *A Raisin in the Sun*. **FIGHT DIRECTION** UMN: *James I*, *As You Like It*, *Troilus and Cressida*, *Hamlet*, *Witch*; Theater Latté Da: *Man of La Mancha*, *Cabaret*; Jungle Theater: *Hand to God*, *Noises Off*; Park Square: *Of Mice and Men*, *Cyrano*; Theater Mu: *Cambodian Rock Band*, *Man of God*; Shakespearean Youth Theatre: *Hamlet*, *Romeo and Juliet*. **INTIMACY** Dark & Stormy Productions: *Extremities*, *Fool for Love*; Theatre Pro Rata: *3 Sisters/No Sisters*; Jungle Theater: *The Effect*. **MUSIC** Annie and the Bang Bang. **TEACHING** University of Minnesota; Guthrie Actors Lab. **AWARDS** 2010 McKnight Theater Artist Fellowship



Jennifer Liestman, C.S.A. (Resident Casting Director) **GUTHRIE** More than 75 productions, workshops and readings, including *Sleuth, Macbeth, Somewhere, Primary Trust, A Doll's House, Cabaret, The Mousetrap, A Midsummer Night's Dream, The Lehman Trilogy, Little Shop of Horrors, The History Plays, Dial M for Murder, For the People, Shane, Into the Woods, Hamlet, Sally & Tom, Vietgone, Sweat, A Raisin in the Sun, The Tempest, A Christmas Carol, Noura, Floyd's, West Side Story, Familiar, Watch on the Rhine, Native Gardens* and *Disgraced*. **FILM/TELEVISION** Casting Consultant: *Master Servant*. **TEACHING** University of Minnesota B.F.A. Actor Training Program; Universities in MN and the U.S. **TRAINING** B.A., Theatre, MSU Moorhead



Lori Lundquist (Stage Manager) **GUTHRIE** Stage Manager: *Primary Trust, The Nacirema Society, The Heart Sellers, Little Shop of Horrors, For the People, Into the Woods, The Little Prince, Vietgone, Guys and Dolls*; Assistant Stage Manager: *A Raisin in the Sun*. **THEATER** Broadway: *Fosse, The Best Man, Holiday*; Off-Broadway: Over 30 shows, including *Head of Passes* with Phylicia Rashad at The Public Theater and Julie Taymor's *A Midsummer Night's Dream* at TFANA; Regional: Over 60 productions at theaters across the country. **OPERA** MN Opera; Indianapolis Opera; Opera Memphis; New York City Opera. **TRAINING** B.A./B.S., Bemidji State University. **PROFESSIONAL AFFILIATIONS** Stage Managers' Association; The Foundation for Stage Managers (Board Member)



Jaya Robillard (Assistant Stage Manager) **GUTHRIE** *A Midsummer Night's Dream, The History Plays* (Production Assistant). **THEATER** History Theatre: *Rollicking! A Winter Carnival Musical, I Am Betty, The Defeat of Jesse James*; Park Square Theatre: *The Snowy Day, Airness, Romeo and Juliet, Pride and Prejudice, Antigone, A Midsummer Night's Dream, Cardboard Piano, Macbeth, Nina Simone: Four Women, The House on Mango Street*; Artistry: *Once on This Island, Songs for a New World*; Sandbox Theatre (Company Member): *Light My Way, Words Do Move, In the Treetops, Big Money, Queens*; Theatre Novi Most: *The Ukrainian Words Project*



GUTHRIE
THEATER



Let us host your next gathering.

Looking to create an unforgettable event? We offer pre-show receptions that feature the Guthrie's stunning spaces, delicious bites and top-notch technical support — plus group tickets to a show.

Learn more at guthrietheater.org/rentals.



We're in the neighborhood.



Jill Moore, MD • Elyse Scheuer, MD • Lynda Kauls, MD • Eloise Galligan, MD



Experience the difference of a physician-led practice.

Our exceptional doctors see patients of all ages for every dermatology need, from urgent care to surgery.

612.746.4144 • marketstreetdermatology.com

MILLY'S

WINE BAR & BISTRO



Show your *Louisa May Alcott's Little Women* ticket for \$2 off your first glass of wine.

YOUR FRIENDLY NEIGHBORHOOD WINE BAR
1129 S Washington Ave, Mpls
(612) 223-8934 | milysmpls.com



.925 SUNEERA
LOS ANGELES

max's

Shops at Excelsior & Grand
3826 Grand Way
St. Louis Park, MN 55416
952.922.8364

jewelry
home
chocolate

www.StyleByMax.com



Live Like Royals

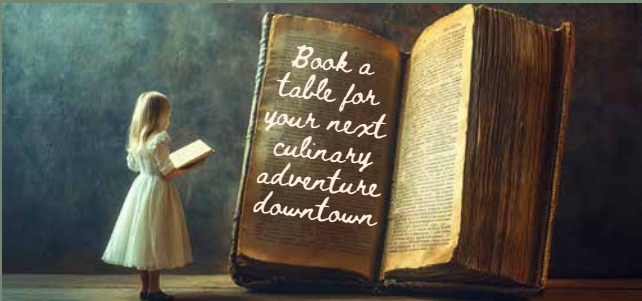
Living like royalty is embracing elegance without arrogance, tradition without pretension, and comfort without compromise. It is living well, thoughtfully, and with purpose *the Noble Way!*



NOBLE SIGNATURE DESIGN

www.nobleinteriorsinc.com • 612.904.0933

Sisters don't let sisters dine, drink nor pay the check alone



Bring your sister(s) to Chloe April 18 - June 21, and enjoy a glass of Prosecco on us. Bring in a sister during happy hour named Jo, Meg, Amy or Beth and we'll throw in a free appetizer!



CHLOE
An American Bistro with a slight French accent

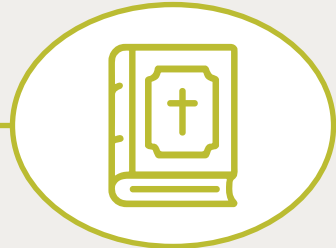
700 S. 3rd Street,
Minneapolis
612-200-8041

THE MARCH FAMILY



Marmee

The family's nurturing moral center



Mr. March

Chaplain in the American Civil War



Meg

Elegant, dutiful romantic



Jo

Spirited, independent writer

THE LAURENCE FAMILY



Mr. Laurence

The March family's generous neighbor



Theodore "Laurie" Laurence

Mr. Laurence's charming, playful grandson



Aunt March

Widowed, wealthy, opinionated great-aunt



Beth

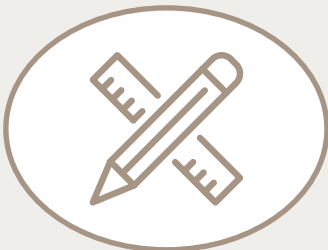
Shy, tenderhearted musician



Amy

Pragmatic, ambitious artist

ADDITIONAL CHARACTERS



John Brooke

Quiet, hardworking, orphaned tutor



Friedrich Bhaer

Warm, genial, German professor

Little Women: A Lasting Mirror

By Jackson Gay
Director

“It’s just a little sensation story, romance and tragedy, and I know it’s all rubbish but it’s apparently good rubbish.”

— Jo in *Louisa May Alcott’s Little Women*

Rehearsing *Louisa May Alcott’s Little Women* has been a balm. Collaborating with so many deeply talented Twin Cities artists in a room filled with warmth, joy and laughter has felt a little radical while the world around us can seem overflowing with ugliness, aggression and suffering.

Our collaboration on this production reflects that ethos. It feels like an act of resistance — even a call to action — to stage a play so full of hope in our skeptical age. “Hope and keep busy,” Abigail May Alcott, Louisa’s mother and the model for Marmee, was fond of telling her daughters.

”

**You’reSoFunnyLaurieOkGoodbye,
be good, study hard, don’t get
expelled, no billiards, do not wait
for me, OffIgoThenByeeeeeeee!**

— Jo in *Louisa May Alcott’s Little Women*

In the book — and in Lauren M. Gunderson’s script — it’s exciting to see these little women, Jo and her sisters, find their voices. Jo pursues her ambition as a writer. Meg embraces being a partner and parent. Amy tilts

toward artistic achievement. And Beth finds peace in a quiet life, unaware of the lasting ripple effect she’ll have.

I’m so drawn to Gunderson’s approach to this adaptation. She balances the historical context with a freeing dash of contemporary sensibility that releases us from veering into a stultifying nostalgia. Her *Little Women* is kinetic and bright while reminding us that the values Alcott reflects remain deeply relevant.

One of those values is the importance of caring for our family, our neighbors and our community. That’s something Minnesotans deeply value and have recently put into action through profound and sustained acts of kindness, care and generosity. As you’ve collectively demonstrated, that’s a form of radical resistance against terror and injustice. And it really echoes the Transcendental thought that underscores *Little Women*.

”

**Trust thyself: every heart vibrates
to that iron string.**

— Ralph Waldo Emerson
in “Self-Reliance”



Bronson Alcott, Louisa's father, espoused Transcendentalism and believed individuals must use their intuition to challenge corrupt social norms. The Alcott family counted two of the movement's most prominent thinkers among their neighbors — Ralph Waldo Emerson and Henry David Thoreau. Alcott and her sisters were steeped in the Transcendental belief in the importance of nature and the need for social reform. It feels right that in Junghyun Georgia Lee's set, it's as if there's no distinction between outside and inside. Nature lives in their home, and their home expands into the natural world.




Dear me, if men and women would only trust, understand and help one another as my children do, what a capital place the world would be!

— Louisa May Alcott in *Little Men*

I don't recall exactly when I first read *Little Women*, but I know it was given to me with the idea that it would reaffirm the Christian values that anchored my parents' view of the world. What rose to the top for me, though, was Jo's fierce

and consistent refusal to be and do what's expected of young women. I was entranced by her pursuit of her dreams to create, to be independent, to believe that a bigger life was possible outside the domestic sphere.

I took that to mean I could pursue anything I wanted, as long as I could find a way to financially support myself. *Little Women* was an early model of independence when I didn't see other examples in my life. Like lots of other little women in the 150 years since Alcott's "sensation story" was published, the novel showed me that breaking the patterns around me — however radical it seemed — was possible, even necessary. Alcott's Jo (who on our stage is also, reflexively, Gunderson's Louisa) is a badass. *And* she's loving, charming, good-hearted and principled. It's exciting to spotlight that story, even today.

In this staging, I wanted Alcott's little women to represent all of us. I wanted you, our audience, to see yourself reflected on the stage, loving and laughing together, supporting our neighbors, mourning those who pass away. We're all the March sisters. 

Love and Genius: An Interview With Lauren M. Gunderson

By Wendy Weckwerth
Dramaturg

WENDY WECKWERTH: Why adapt *Little Women*, source material that's been retold in many forms — stage, film, television, ballet, opera, anime and fan fiction, among others — over the years?

LAUREN M. GUNDERSON: It's a story that's been part of my life for so long. My first interaction with the story was being cast as Jo in a middle school production performed in the cafeteria. I had really short hair at the time, and when Jo sells her hair, I took off the hairpiece and shocked everyone. My well-timed punk pixie cut was a theatrical triumph.

Fast forward to a conversation with Zak Berkman, Artistic Director at People's Light. He asked to read my adaptation of *Little Women*. I said, "I don't have one," and he said, "You probably should." He was right. Louisa May Alcott's novel pretty much checks off everything I attune my voice to: historical characters, sisterhood, feminism, writers, women artists supporting each other and love stories.

I wanted to focus on the courage it takes to tell a true story, especially your own. Also, I love a love story, and the love stories in this book are so unique, complex and full of twists. I wanted to let those love stories shine — while showing that the family's care for each

other is the brightest love of all. It can't be dimmed, no matter what tragedies come for them.

WW: What was the most challenging part of adapting this long piece of fiction for the stage?

LG: Adaptation is largely curation, and it starts with a real respect for the language. I'm so impressed with the tender wit of the novel's interior revelations and reckonings. To capture that in a way that didn't feel strange, I needed to make that intriguing interiority *external* — but in a propulsive and poetic way. That meant cutting a lot: much of the father's journey, a lot of Amy's arc toward maturity and so many other details.

WW: Generations of readers have shared an ongoing question: Are you a Meg, a Jo, a Beth or an Amy? Which are you?

LG: I'm probably mostly a Jo. But I'm an Amy, too — there's some feist in me. And when I became a mom, I discovered a lot of Meg's nurturing qualities. I like to think I have some of Beth's quiet but stern confidence. But this adaptation leans into the idea that the March sisters, even if they seem like archetypes, are very much woven into each other. I see Beth's quiet strength in the ferocity of



Jo and Amy. Meg displays a streak of Jo's plucky independence when she refuses John's proposal. They share so much with each other and with Marmee.


WW: Which aspects of the real Louisa May Alcott did you want to capture in the Louisa/Jo character?

LG: Alcott's grit, craft and determination were a real engine of her life and her creativity, which at that time was very "unfeminine." I'm so proud of her for not bowing to the pressure of societal norms in her era.

Also, she never married. But the unpredictability and depth of Jo's relationship with Laurie in *Little Women* make me think there's some real experience behind it. Before this novel was a bestseller, Alcott was writing her "blood and thunder tales," thrillers with kissing and all sorts of stuff she wasn't supposed to write about — but they sold. It's as if she thought, *If you want a pirate romance, I'll write you a pirate*

romance. You want horror? Sure, I'll bring in some ghosts.

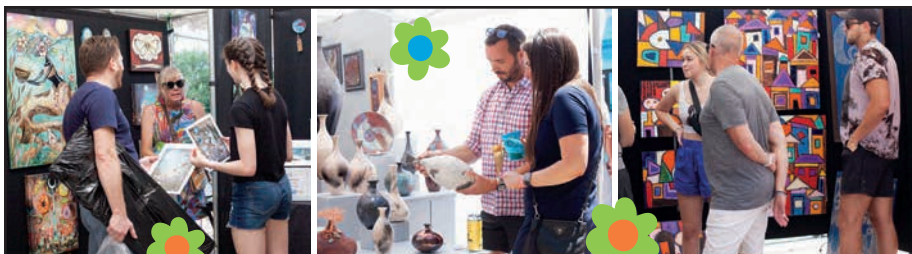
WW: What are you hoping audiences carry with them after seeing your adaptation?

LG: Most people have read or seen some version of *Little Women*, so what happens won't be a surprise. But how it happened — Alcott's actual experience that informed the novel — might be a surprise. So I want people to think, *Wow, that was such a moving story.* But also, *Holy crap, this woman was genius.* Alcott was an icon — a model of grit with an unstoppable brain and wide-ranging creativity. She proved that women's stories can change the world. That's a powerful legacy. 

EXPLORE MORE

Scan the code or visit guthrietheater.org to read our play guide.





ART IN FULL BLOOM

DISCOVER TWO OF
THE CITIES' MOST
BELOVED FESTIVALS!



Loring PARK
ART FESTIVAL

JUNE 20 & 21, 2026
ON THE BEAUTIFUL MPLS RIVERFRONT
WWW.STONEARCHBRIDGEFESTIVAL.COM

JULY 25 & 26, 2026
MPLS URBAN OASIS OF ART AND CULTURE
WWW.LORINGPARKARTFESTIVAL.COM

beem
LIGHT SAUNA

**Elevate
your
wellness
routine**

beem® Downtown Minneapolis
623 Washington Ave, South
Use code: **LightUP** for 50% off your first 2 sessions. Or call 612-299-1127 and mention this ad.

Private Infrared Sauna + Red Light Therapy

COMING NEXT

History Theatre classic returns!

COURTING HARRY

By **LEE BLESSING**
Directed by Joel Sass
May 14-June 7, 2026

"...a love letter to the Boundary Waters."
- PIONEER PRESS

The Trailblazer is Back!

ROOT BEER LADY

Written and Performed by **KIM SCHULTZ**
Originally directed by Addie Gorlin-Han
Remounted by Jess Yates
July 8-26, 2026

history theatre
historytheatre.com

Donor Spotlight: Edie French and Paul Auguston

Edie and Paul's relationship with the Guthrie spans decades. Edie's late mother, Sally — an avid Guthrie supporter — ignited her love of theater. Today, Edie and Paul honor Sally's legacy through their support of the Guthrie as Annual Fund donors.



Do you remember your first Guthrie show?


EDIE: I saw *A Christmas Carol* in 5th grade. We had recently moved, and my mother worried about leaving the rich cultural life of the East Coast. When she discovered the Guthrie, she felt like she had gone to heaven!

As donors, what inspires you to give to the Guthrie?

PAUL: The shows are simply that good. The Guthrie brings value to our lives, and we felt compelled to give back.

EDIE: It also honors the legacy of my mother. Whenever I'm here, I feel like she's sitting beside me.

What does it mean to have an arts organization like the Guthrie in the community?

EDIE: We have an incredibly rich theater community here. The Guthrie plays an important role in the stability of that ecosystem and provides opportunities for local artists to work at theaters throughout the Twin Cities. 

THANK YOU

This season, donor support will pave the way for essential programs that bring exceptional theater to our community, including:

- Student matinees that welcome thousands of youth to the theater, many for the first time
- ASL interpretation, assistive listening devices, relaxed performances and low-cost ticket programs starting at \$5

Thanks to all our wonderful supporters for your generosity.

SUPPORT THE ART YOU LOVE

Scan the code or visit guthrietheater.org/give to make a gift today.

Help us bring bold, inspiring stories to life on our stages.



Corporate, Foundation and Public Support

Generous support from our corporate, foundation and government partners ensures the work on and off our stages remains accessible to all patrons. To learn about sponsorship opportunities, corporate benefits and more, contact the Development Team at 612.225.6200 or give@guthrietheater.org.

\$250,000 and above



This activity is made possible by the voters of Minnesota through a Minnesota State Arts Board Operating Support grant, thanks to a legislative appropriation from the arts and cultural heritage fund.

\$100,000 - \$249,999



David & Janis Larson Foundation



\$50,000 - \$99,999



\$25,000 - \$49,999



Fred C. & Katherine B. Andersen Foundation; The George Family Foundation;
The Harold and Mimi Steinberg Charitable Trust

\$15,000 - \$24,999



Hugh J. Andersen Foundation; City of Minneapolis Office of Arts and Cultural Affairs - Bridge Fund for Dance 2025;
The Edward R. Bazinet Foundation

\$5,000 - \$14,999

Boss Foundation; Carlson Family Foundation; Christensen Group Insurance; Cyber Advisors;
The Elizabeth C. Quinlan Foundation; Jefferson Lines; Mairs & Power; Mayo Clinic; RahrBSG; RBC Wealth Management;
Margaret Rivers Fund; Robins Kaplan LLP; Sit Investment Associates Foundation; Talcott Financial Group;
Tennant Company; theater works!

\$2,500 - \$4,999

Dellwood Foundation; Hunt Electric; Palisade Asset Management

\$1,000 - \$2,499

Bachman's Inc.; High Point Networks; National Checking Co.; Quality Furniture Rental

In-kind support

Clinique; Kowalski's Markets; MAC Cosmetics; Nothing Bundt Cakes;
St. Croix Cleaners; Streamworks, LLC

2025–2026 Season Sponsors

The Guthrie is grateful to our Annual Fund Platinum Producers and Illuminate Campaign Leadership Supporters whose generous contributions ensure the Guthrie can create transformative theater. To help us light the way forward, contact Campaign Director Jen Baumgartner at jenniferb@guthrietheater.org.



Anonymous[^]
 Ameriprise Financial[^]
 Richard & Susan Anderson[^]
 The Martha & Bruce Atwater Fund^{^†}
 The Edward R. Bazinet Foundation[^]
 Cargill Foundation[^]
 C. Curtis Dunnavan Fund[^]
 The Carlson Family Foundation[^]
 Jim & Julie Chosy[^]
 Margie & David Dines[^]
 Bill and Penny George & The George Family Foundation^{^†}
 Pierson M. & Florence B. Grieve Family Fund of The Saint Paul Foundation[^]
 Lorraine R. Hart[^]

Joyful Noise Charitable Foundation[^]
 John & Kathy^{*} Junek[^]
 Anita Kunin[^]
 David & Janis Larson Foundation[^]
 Allen & Kathy Lenzmeier^{^†}
 David & Diane Lilly[^]
 Kathleen F. & David W. MacLennan Fund of The Minneapolis Foundation[^]
 W. Duncan & Nivin MacMillan Foundation^{^†}
 W. Thomas & Christine B. McEnery[^]
 David & Leni Moore[^]
 Lynn & Anders Myhran[^]
 Marilyn Carlson Nelson[^]
 Wendy Nelson[^]

Bob Rosenbaum & Maggie Gilbert[^]
 The Sanger Family Foundation[^]
 The Scooby Foundation[^]
 The Shubert Foundation[^]
 Lee & Peg Skold[^]
 U.S. Bank Foundation^{^†}
 Mary W. Vaughan^{^*}
 Whitney & Elizabeth MacMillan Foundation[^]
 Margaret Wurtele^{^†}

[^]Illuminate Campaign Leadership Supporter
[†]Annual Fund Platinum Producer
^{*}In remembrance

Annual Fund Contributors

We gratefully acknowledge the generosity of our donors whose annual support enables the Guthrie to remain a vibrant center for theater performance, education and training in our community. To join this group in ensuring the Guthrie continues to thrive, contact the Development Team at 612.225.6200 or give@guthrietheater.org.

PLATINUM PRODUCERS

\$100,000 and above

The Martha & Bruce Atwater Fund
 C. Curtis Dunnavan Fund
 Bill and Penny George & The George Family Foundation
 W. Duncan & Nivin MacMillan Foundation
 Margaret Wurtele

Priscilla Brewster
 Suzanne Bross
 Susan & Dick Crockett
 Lorraine R. Hart
 John & Kathy^{*} Junek
 Dr. Tom Knabel & Kent Allin
 David & Diane Lilly
 W. Thomas & Christine B. McEnery
 Jim & Linda Milow
 Lynn & Anders Myhran
 Wendy Nelson & Cara Battles
 The Sanger Family Foundation
 Richard Sattler & Debra Andreas
 Lee & Peg Skold
 Steven & Catherine R. Webster
 Weiser Family Foundation on behalf of Irving & Marjorie Weiser
 John & Sandy White
 Todd & Kyoko Zaun

Ellen Archibald
 Jennifer Reedstrom Bishop & Jon Bishop
 Jane Robertson Blanch Fund
 Rochelle Brandl Charitable Trust
 Tyrone^{*} & Delia Bujold
 Jim & Julie Chosy
 Margie & David Dines
 Myron I. Frisch in memory of Delores Arlean Lutz
 Diane & Tony Hofstede
 Timothy A. Huebsch
 Richard^{*} & Bonnie Johnson
 Susan Kinder & David Vealitzek
 Margee V. Kinney
 John S. Knapp
 Kristen Ludgate & Grant Booth
 Kathleen & Dave MacLennan
 Richard McCarthy, Jr. & The C.A. Weyerhaeuser Memorial Foundation
 Jennifer Melin Miller & David Miller
 Katherine Murphy
 Marilyn Carlson Nelson

EXECUTIVE PRODUCERS

\$50,000 – \$99,999

Katherine Harris, Tom Keyser & the Gavia Charitable Fund
 Patricia & Peter Kitchak
 Allen & Kathy Lenzmeier
 David & Leni Moore

LEADING PRODUCERS

\$25,000 – \$49,999

Anonymous
 Richard & Susan Anderson
 Marc & Alicia Belton
 Blythe Brenden-Mann Foundation

PRODUCERS

\$15,000 – \$24,999

Anonymous

Leave a legacy for the next generation

The Guthrie Heritage Society ensures that our community will experience theater for years to come by including the Guthrie in their estate plans. To become a member and enjoy exclusive benefits, visit plannedgiving.guthrietheater.org.



PHOTO: GRETA OGLESBY, NUBIA MONKS AND DEDRA D. WOODS IN *THE NACIREMA SOCIETY* (DAN NORMAN)

Jay Nibbe
Ellen Oglesby & Eric Seed
The Pincus Family
Bob Rosenbaum & Maggie Gilbert
Bonnie Scott
Steve Thompson & Ron Frey
Meredith & Sam Tutterow
John Walhour
The Jan Willette Family

ASSOCIATE PRODUCERS

\$10,000 - \$14,999

Dr. Tadashi & Susan Allen
The Gregory & Lauren Anthony Fund
Martha Goldberg Aronson & Daniel Aronson
Karen Bachman
Sue A. Bennett
Abdhis & Mary Bhavsar
Michael J. Blum & Abigail Rose
Peter & Maura Brew
Roma Calatayud-Stocks & Thomas Stocks, M.D.
Michael V. & Ann C. Ciresi
Carol M. Downie & Gregory J. Thomas
Gerald A.* & Kay Erickson
Amy & Miles Fiterman
Kenneth Glaser & Janet Heinrich
Dr. Stanley & Luella Goldberg
The Margaret Grieve Fund
Joseph & Deirdre Haj
Todd Hartman
David & Stacey Hurrell
The Kabat Family
The Andrea & Brian Kalis Family
Erik & Mandi Karulf
Pamela & Ronald Kaufman
Iris & Jay Kiedrowski
Jeffrey & Lauren Kiesel
John & Maureen Knapp
James & Susan Lenfestey
Ryan Long & Lindsay Strauss
Audrey & Jim Lucas
Joan Maclin
Tim Manning & James Bremer
Munir & Sophie Meghjee
Helen M. Meyer
Renee Montz
Jay & Jennifer Novak
Steve & Tamrah Schaller O'Neil
Marri M. Oskam
Louise W. Otten
Anne Paape
Gregory Page & Kathleen Blatz

Naomi & Greg Pesky
Brian Pietsch & Christopher Herrman
Nick & Judy Priadka
Mary & Tom Racciatti
Ann Rainhart & Jason Digman
Benjamin & Katherine Reinhardt
Molly A. Rice & Andrew D. Slothower
Rebecca & Mark Roloff
Gerald & Julie Rudowsky
Ken & Sally Spence
John & Laura D. Taft
Catherine A. Taylor
Dr. Kweli P. & Christina D. Thompson
Dr. & Mrs. Paul L. Trump
T.K. & Linda Walling
Justin & Jessica Weinberg
Frances & Frank* Wilkinson
Tom & Nancy Willette
David A. Wilson & Michael J. Peterman
Heidi & Michael Wilson
Karen & John Winkelman
Charles & Julie Zelle

DESIGNERS

\$5,000 - \$9,999

Anonymous (10)
Rick & Joan Ahmann
Michael Antinone & Erika Smith
Paul Auguston & Edie French
Dale & Ruth Bachman
Mary & Bryan Bennett
Lee & Craig Blowers
Verna Kay Bormann
Elizabeth & Joseph Brama
Deborah & Fredric Bremseth
The Stephen W. & Nancy S. Bright Fund
Leith Brooks Barry
Thomas Brothen & Elizabeth Molberg
Buuck Family Fund
of The Minneapolis Foundation
Tom & Nancy Caswell
Kerry Childe
Katherine J. Conover
Stephen & Sylvia Cook
Benjamin & Laura Cooper
Christina & Casey Corwin
Ellie Crosby - The Longview Foundation
John W. Dayton
Mary Dolan - The Longview Foundation
Doug & Kate Donaldson
Charles & Barbara Donatelle
Dr. Mary Anne Ebert & Paul Stembler
Bruce Fenster & Diane Lind Fenster
Vicki & Si Ford
Martha Gabbert
Andrew Gaillard & Megan Newstrom Gaillard
Lynn Glesne
Colette Goderstad
Carolyn & Robert Goedken
Mike* & Barbara Goldner
Mary & Peter Gove
Richard S. Gregory
Grinnell Family Fund
of The Minneapolis Foundation
Thomas & Mary Gross
Daniel & Ruth Haggerty
Sandra & Barnard Hall*
The Head Family Foundation
Linda Lovas Hoeschler & Peter Blyberg
Drs. Charles R. & Sally B.* Jorgensen
Ivars & Gloria Kauls
David Kirkland
Daniel & Constance Kunin
Chad M. & Rafina Larsen/Larsen Fund
Patricia A. Lawrence
Richard Leland
Ilo & Margaret Leppik
Stephen Litton
George M. Logan & Susan H. Holman
Steve & Kathi Austin Mahle
Susan & John Manrodt
Mary & Ray Mithun
Ann & Bruce Nerland
Les H. Nielsen
Ron & Toni Noah
David & Karen Olson Family Foundation
Kelley H. & Scott R. Olson
Richard & Marti Pyle
Anton & Beth Rang
Katherine Reed & Paul Gertenbach*
Ede & Jack Rice
Thomas & Nancy Rohde
Jack & Marty Rossman
Miriam Rykken & John Schulz
Kay Savik & Joe Tashjian
Rachael Scherer & Stephen Imholte/
Baci Fund of The Minneapolis Foundation
Sharon Schmidtbauer
Rebecca & Mark Shavlik
Richard Silcox
Charles Sorenson
Jim & Mimi Stake
Janis & James Stephenson
Jon & Kristine Stevens
John & Kenn Stofko-Carlson

David Swanson in memory of
Penny Sweitzer
Carolyn Taylor
Marcia Townley
Tschudy Family Foundation
Steve* & Melissa Wehrle
Cornie & Betty Ann Wiens
John Windhorst
Lisa M. Wollan
Paul Woodard

ARTISTS

\$2,500 - \$4,999

Anonymous (7)
Steven & Beverly Aanenson
Alden* & Elizabeth Abraham
Kevin D. Abrahamson
Peggy Steif Abram & Jon Abram
David & Cynthia Abrams
Kathleen R. Adix
William & Suzanne Ammerman
Fiona & Chuck Anderson
Mike & Peggy Anderson
Steven & Kathy Anderson
Allen & Andi Barnard
Margaret & J.R. Beahrs
Keith & Mary Bednarowski
Nicole Behm-Koep & Kraig Koep
Bob Beltz
Ellen Bendel-Stenzel
Beth Bird
Stephanie Boening-Ondik & Dennis Ondik
Boren Family Fund of
The Minneapolis Foundation
Jeffrey D. Bores & Michael Hawkins
Lynn & Julie Boyd
Evelyn & David Brabec
Will Bracken Family Foundation
Michael & Carol Bromer
Kelly Brooks & Ari Wolfe
Michael & Edith-Nicole Cameron
Kara & John Carrier
Tim Carter & Sally Wahman
Dana & Pat Chabot
Elizabeth & Daniel Childs
Carla Clasen
Timothy Claus & Louise Anderson
Cinda Collins
Paula Cooney & Aldo Walker
Jay & Page Cowles
Betsy & Ed Cussler
Toni & Bruce Dachis
Douglas & Wendy Dayton Foundation
as directed by Elizabeth W. Nelson
John & Bette DeMars
Sara & John Donaldson
Donohue Novak at Law
Nathan Dungan & Susan Hawks
William & Kareen Ecklund
Mary Jo & David Eide
The Ekdahl Hutchinson Family Fund of
The Saint Paul and MN Foundation
M. Vaughn Emerson & Katie Haag
Richard* & Beverly Fink
Mitch Finne & Sara Van Kempen
Mark Ratner & Marcy Frost
Fullerton Family Fund of
The Minneapolis Foundation
Jerry* & Ellen Gallagher
Steve & Kathy Gaskins
Leland & Beverly Gehrke
Heidi & Howard Gilbert
John & Barbara Goergen

Michael & Kara Goetz
Arlene Goter
Margot & Paul Grangaard
Bob & Julie Guelich
Jon A. Haakenson
Jana & Erik Hagen
Peggy Hall & Lee Barry
Philip & Janet Hallaway
Shelly & Michael Hanson
Corey & Stephanie Harbott
Emily & Jed* Harris
Leah Harrison Stich Fund
Sally Hart
William & Kathleen Haug
Thane & Blanche Hawkins
Carrie Hefte & James Hanton
Les & Judy Heinen
Peter & Carolyn Hendrixson
Nancy Heng
David R. Hilden & Julie Railsback
Ian & Karla Hillier
The Julianna Marie Hillmer
Memorial Fund
The Hols Family
Char Hovi
Penny Hunt
Mary Ingebrand-Pohlad
Russell & Bonnie Japs
Roy & Kathy Jensen
Lori Johnson & James MacKay
Lori & Kevin Johnson
Bruce R. Jones
Ellen Jones & Robert McKlveen
Winton Jones Foundation
Lori & Jay Jorgenson
Timothy Jorissen
Drs. Scott & Julie Kammer
Lynda Kauls & Geoffrey Emerson
Dr. Perri Kauls & Desmond Kilcoyne
Dr. Thomas E. Kelly
Marilyn & Jack Kemme
Marie N. King
Drs. James & Kelsey Klaas
Ann Kools
Patricia Kramer
John & Catharine Kristian
Drs. Kimberly Krohn & John Fishpaw
Susan K. Kunz
Suzanne & Miles Lahr
Paulita LaPlante
Wendy Willson Legge &
Gordon E. Legge
Sally & Ernest Lehmann Family Fund in
memory of Sally Lehmann
John & Vicky Lettmann
Mac & Mary Lewis
Noreen & Steve Linney
David & Peggy Lucas
Pat & Sara Mack
Ron & Mary Mattson
Susan & Edwin McCarthy
Dr. Robert & Virginia McCollister
James J. McConnell Fund at The
Chicago Community Foundation
Robert* & Polly McCrear Family Fund of
The Minneapolis Foundation
Sam & Patty McCullough
Melinda & Mark McLellan
Robert & Laurie McNeill
Karen & John* Meslow Charitable Fund
William Messer
Charles & Carolyn Meyer
Dr. Jan Meyer & Roger Jorgenson

Stephen C. Meyers
Anne W. & Eldon C.* Miller
Craig R. Miller
Lucy C. Mitchell - The Longview
Foundation
Sheila & Jim Moar
Jack L. & Chris Morrison
Don & Jean Mueting
Gary & Mary Nelsestuen
Erik & Karen Nelson
Dr. Katherine J. Nevins
Jeffrey H.J. Nipper, M.D. & Terri Drake
Dale & Kelly Nitschke
John & Joan Nolan
Valdemar & Marilyn Olson Fund
Gary & Jannette Paulu
Greg & Karen Pielow
Bill Pinegar
Tad & Cindy Piper Fund of
The Minneapolis Foundation
John & Dolores Port
J. David Prince
Irene A. Quarshie
E. Thomas Binger* & Rebecca Rand
Fund of The Minneapolis Foundation
Dr. Edward & Joyce Ratner
Mindy Rechelbacher
Remele Family Fund of
The Minneapolis Foundation
Robin Ritter & Ben Emmons
PJ & Lara Ritters
Jeannine Rivet & Warren G. Herreid II
Barbara & David Roen
Toby & Robert Rubin
Bob & Stacy Salmi
Jo Ellen & H.L. Saylor
Lili Hall Scarpa
The Thomas L. & Lynn M. Schaefer
Family Fund
Ann-Therese E. Schmid
Bernie & Jane Schmitt
John Schomaker
Judy Schwartzau
Nina & Frederick Schwenk
Mariana & Craig Shulstad
Melissa Cohen Silberman &
Sheldon Silberman
Lawrence J. Sinak & Anne Black-Sinak
Drew Smith & Ann Cooper
Dr. James & Joanne Smith
Kay Smith
Nikki Sorum & Simon Foster
Steven & Gwen Starr
Ceryl A. Sullivan
Linda Svitak & David Feroe
Kay & Jim Tennesen
Joseph & Kaimay Terry
Michelle & Douglas Thayer
Dr. Andrew J. Thomas
Murray Thomas & Stephen Davis
Dave Westrum
Andy & Gary Whitford Holey
Nedra & John* Wicks
Sri & Aks Zaheer
The Honey & Larry Zelle Family

*In remembrance

AS OF MARCH 18, 2026
We do our best to ensure that all donor
listings are current and correct. To
update your listing, please contact us at
612.225.6200 or give@guthrietheater.org.

FANFARE

FOR THE GUTHRIE

FRIDAY, JUNE 26, 2026 • THE DEPOT MINNEAPOLIS

Join us for the second annual Fanfare — an unforgettable night of community, connection and artistry celebrating the legacy of the Guthrie Theater.

TICKETS AVAILABLE NOW

guthrietheater.org/fanfare

TOGETHER, WE GO FURTHER



THE WORLD'S MOST INTELLIGENT SUPPLY CHAIN NETWORK

SPS Commerce connects businesses through data, decisions, and relationships across a global network of trading partners. Together we help businesses and communities move forward, solving complex challenges every day.

We're proud to support the Guthrie in connecting communities through theater.



Theater Goers Special Offer For

**\$75
OFF**

New Customers
Save **\$75** on your first
repair or maintenance*

Book With Code:
GUTHRIE



612-824-2656
standardheating.com

*Good for 1 use. Restrictions apply.
Excludes Smart Club. Expires 12/31/26.

Board of Directors

Chair

ReBecca Koenig Roloff
Past Chair
 Jennifer Reedstrom Bishop
Director
 Joseph Haj
Treasurer
 David Dines
Secretary
 Todd Hartman
Directors
 Susan W. Allen
 Martha Goldberg Aronson
 Abdhish Bhavsar
 Michael J. Blum
 Peter Brew
 Priscilla Brewster
 Kelly Brooks
 Roma Calatayud-Stocks
 James L. Chosy
 Jeff Davidman
 Amy Fiterman
 Diane Hofstede
 Timothy A. Huebsch
 David Hurrell
 Hans Kabat
 Lisa Johnson Kelly
 Jay Kiedrowski
 John A. Knapp
 David M. Lilly, Jr.
 Ryan J. Long
 Audrey Lucas
 Tim Manning
 Helen M. Meyer
 Renee Montz
 David Moore, Jr.
 Lynn Myhran
 Wendy Nelson
 Scott R. Olson
 Anne Paape
 Naomi Pesky
 Brian Pietsch
 Benjamin Reinhardt
 Molly A. Rice
 Robert A. Rosenbaum
 Jerry Rudowsky
 Lee Skold
 Tara D. Sutton
 Laura Delaney Taft
 Kweli P. Thompson
 Steven J. Thompson
 Meredith Boone Tutterow
 John Walthour
 Steven C. Webster
 Justin P. Weinberg
 Jamie Wilson
 Todd Zaun

Lifetime Directors

Martha Atwater
 Karen Bachman
 David C. Cox
 William George
 Polly Grose
 Stephen W. Sanger
 Douglas M. Steenland
 Irving Weiser
 Margaret Wurtele
 Charles A. Zelle

Guthrie Staff

ARTISTIC

Artistic Director
 Joseph Haj*
Executive Assistant to the Director
 Alise Hansen
Senior Artistic Producer
 Tracy Bridgen*
Associate Producer
 Addie Gorlin-Han
Artistic Associate/Resident Casting Director
 Jennifer Liestman, C.S.A.
Literary Manager and Resident Dramaturg
 Carla Steen
Director of Education and Engagement
 Amanda White
Associate Director of Education and Engagement
 Lezlie Cross
Education and Engagement Lead Manager
 Jeremy Jones
Education and Engagement Manager
 Rachel Ropella
Artistic Department Assistant
 Josiah Turner

DEVELOPMENT

Director of Development
 Krista Mathews*
Campaign Director
 Jennifer Baumgartner
Director of Strategic Partnerships
 Rachael Crew
Senior Manager, Foundation Relations
 Liz Houlton
Senior Philanthropy Officer
 Sarah Stout Miller
Philanthropy Officer
 Martine McLellan
Director of Annual Giving and Operations
 Eric Broker
Annual Fund Manager
 Emily Pyle
Development Events Manager
 Marge Pearson
Stewardship
Events Associate
 Sophie Bassat
Development Operations Manager
 Greg Baker
Prospect Research and Philanthropic Systems Manager
 Geneva Gaukel

MANAGEMENT

Managing Director
 Trisha Kirk*
Assistant to the Managing Director
 Jacob Collins-Hopson

General Manager
 Diana A. Brown*
Company Manager/General Management Associate
 Carolyn Hall
Assistant Company Manager
 Jessie Fanshaw
Director of Finance
 Janet E. Balej*
Accounting Manager
 Kristin Ostebee
Accounting Specialist
 Kyle Dvorak
Accounts Payable Specialist
 Heisun Han
Accounting Associate
 Andrew Buckholtz
Director of Human Resources
 Justin Ruegg*
Senior Human Resources Generalist
 Judi Orland
Human Resources Systems Administrator
 Brooke Hajjini
Director of Marketing and Communications
 Elizabeth Deacon*
Media Relations and Partnerships Manager
 J'Kalein Madison
Tessitura Support Specialist
 Chris Asp
Digital Marketing Manager
 Joshua Cummins
Digital Marketing Associate
 Bonnie Young
Videographer
 Matt Melander
Associate Director of Marketing
 Johanna Buch
Senior Graphic Designer
 Brian Bressler
Graphic Designer
 Sierra Ross
Writer and Editor
 Christine Stevens
Marketing Associate
 Allie McCurnin
Director of Ticketing
 PattiJo Verdeja
Season Ticket and Group Sales Manager
 Kemi Ojelade
Box Office Manager
 Trish Hruby
Box Office Supervisors
 Cici Cancellieri
 Alex Goebel
 Abraham Sweet
 Dawn Tessmer
Box Office Leads
 Davis Brinker
 Zoe Champoux
 Steven Schroer
 Ryn Van Wyhe
Senior Box Office Specialists
 Matthew Everett
 Jo French
 Karen Prince
Box Office Specialists
 Jeremy Bode
 Mike Brown

Maddie Bryant
 Laura Burdette
 Corvus Eckdahl
 Alisa Erickson
 Elle Driskell Felts
 Viva Graff
 Raeanne Gayan
 Makayla Haffner
 Thomas Honeywell
 Bee Johnson
 Kyle Kepulis
 Zephyr Keteyian
 Ben Kockelman
 Karen Kremer
 Javan Mngrezzo
 Ashe Olivar
 Lizzy Pouliot
 Rachel Raisanen
 Brian Thurn
 Adam Wurst
 Brina Zappa
Director of Operations
 James D. Scott*
Event and Facility Sales Manager
 Olivia Smith
Director of Facilities
 Brian Oberholtzer
Associate Director of Facilities
 Matthew A. Gilbertson
Maintenance Engineers
 Cedar Arcturus Loren
 Michael Flaherty
 Jake Schwartz
Environmental Services Assistant Manager
 Micah Nelson
Housekeeping Leads
 Benjamin Peña
 Asia Wright
Housekeepers
 Christopher Harvell
 Thaddeus Jameson
 Maria Luna
 Gage Mattson
 Eve Muonio
 Tom Nelson
 Kelly Nielsen
 Mio Ollin
 Wila Sadik
 Joshua Veasey
 Rose Verastegui
Director of Information Technology
 Tim Conway
Database Administrator
 Chris Jensen
Information Technology Generalists
 Amy Van Patten
 Lee Vang
Director of Guest Operations
 Hunter Gullickson
Assistant Director of Guest Services
 Caitlin Childe-Archuleta
Lead Guest Services Associates
 Kevin Drew
 Julian Ibrahim
 Toni Jefferson
Senior Guest Services Associate
 Cathy Hanson

Guest Services Associates

Donna Cerkvenik
Claudia D'Auria
Gregg Gustafson
Kaillan Hanley
Jeffrey Katz
Landon Kuhlmann
Everett Parker
Em Rode
Cristian Tineo
Nijah Williams

Senior Guest Services and Retail Associate

Lauren LaFond

Guest Services and Retail Associates

Ava Barrett
Dan Forstner
Helena Kouame
Grace Murayama
Alex Stevenson
Diego Symouksavanh
Madelyn Tax
Em Whiteaker

Accessibility Coordinator

Robyn DeCourcy

Lead Stage Door Attendant

Hunter Goldsmith

Assistant Director of Public Safety

Erin Boylan

Public Safety Supervisor

Jules Pivec

Public Safety Specialists

Teagen Brendemuehl
Antonio Duke
Ryan Fritzke
Amelia Gomez
Oscar Martinez
Link Matt
Joy Minge
Jack Nelson
Marcus Papasodora
Ricardo Ramos, Jr.
Joy Showalter
Jodi Stoffel
Trevor Swedeem
Kelly Walker
Becky Weinhandl
Marc Zale

Director of Retail and Merchandising

Kay McGuire

Lead Retail Associate

Michael Gonzalez-Couture

Director of

House Management

Elton Turnage-Manuel

House Manager

Katie Roland

House Supervisors

Julie Cross

Jonathon Freeman

Lindsay Higgins

Max Jacobson

House Leads

Alyssa Isaacson

Jason Litzinger

Lead Ushers

Rosanne Gronseth

Patrick Mach

Ushers

Elliot Allen

Patricia Arnold

Jon Bushee

Ozzy Coyer

Renee Craig-Ethen

Mary Kay Crawford-Lorfink

Lillian Cross

Constance Donnelly

Dominique Duncan

Rachel Elkins

Alfredo Pástor Espin

Frankie Eugenio

Janelle Festler

Patty Graham

Karl Gustafson

Abby Heil

Baylie Heims

Ann Hite

Kirk Jensen

Mick Johnson

Mattie Kantor

Paula Klimek-Partch

Aaron Kogle

Alex Kouhi

Monica Kuhn

Brady Linderman

Cal Martin

Sharon Peterson

Jim Rubendall

Danielle Shorty

Foster Smith

Pamela Sorenson

Skye Sparks

Krista Steichen

Dawn Stevenson

Emma Tonn

Lisa Torrez

James Velek

Joani Werner

Damon Ziebarth

Kitchak Lounge Hosts

Richard Giovinazzo

Isaiah Langowski

Peter Plaehn

Jim Rubendall

Skye Sparks

PRODUCTION

Director of Production

Sarah Gullickson*

Production Manager

Lesley Fairman

Production Operations Manager

Sara L'Heureux

Production Stage Manager

Karl Alphonso

Events Production Manager

MJ Leffler

Technical Director

Jonathan JollyStone

Associate Technical Director

Jon Woelfer

Assistant Technical Director

Liz Jovanovic

Scene Shop Coordinator

Jesse Delaney

Head Carpenter

Christopher Sibilia

Lead Carpenters

Dalen O'Connell

Jared Shofstall

Carpenters

Will Bankhead

Bridget Gustafson

Rocky Rosga

Head Automation Technician

Jackson Halphide

Scenic Arts Director

Heidi Larson

Lead Scenic Artists

Lydia Francis

Jeni Raddatz-Tolifson

Scenic Artist

Sophie Block

Costume Director

Amy Schmidt

Associate Costume Director

T. Tyler Stumpf

Costume Design Assistants

Jacourtney Mountain-Bluhm

Abby Vaughan

Drapers/Tailors

Juliann Benson

dj gramann ii

Annie Rupprecht

First Hands

Denee Anderson

Clare Brauch

Mary Linda

Stitchers

Teresa Davich

Dana Shepard

Costume Craftsperson/Dyer

Vanessa J. Lopez

Wardrobe Coordinator

Kristin Sauter

Wardrobe Assistant

Meghan Otenbaker

Head Wig and

Wardrobe Technician

Molly Fox

Wig and Wardrobe Technicians

Madison Blotz

Jenny Gants-Moen

Zamora Simmons-Styles

Head Wig, Hair and

Makeup Artist

Jessica Rau

Key Wig, Hair and

Makeup Artist

Dottie Rose Tremmel

Wig Assistant

Jamakah Webb

Lighting and

Projections Director

Alice Trent

Head Electrician

Megan Winter

Lead Electrician

Jack Hinz

Lead Light Board Operator

Angelina Vyushkova

Light Board Operator

Mary Shabaturo

Lighting Department

Associate

Lily K. Petit

Props Director

Karin Rabe

Prop Shop Coordinator

Dan Fritsche

Head Props Artisan

Jeff Harris

Props Shopper/Buyer

Rebecca Jo Malmström

Props Artisan

Erin Brandt

Head Sound Engineers

Paul Estby

Grace Heatherington-Tilka

Lead Sound Engineer

Brandon Smith

Sound Engineer

Matthew Koch

Sound Department

Associate

Katharine Horowitz

Stage Operations Director

Sam Diekman

Head Stagehands

Matt Dawson

Jessica Kelley

Automation Operator

Lillian Crawford

PRODUCTION OVERHIRES

Production Assistant

Lea Moore

Carpenters

Jesse Crouch

Brock Hefel

Juniper Huntington

Olivia Nyman

Ada Packiewicz

Patrick Wilson

Industrial

Gamma Lister

Mac Meza

Wig Maintenance and

Construction Techs

Julia Acton

Kristoffer Pirie

Wardrobe Assistants

Meghan Dougherty

Hannah Fiedler

Wig and Wardrobe

Technicians

Josie Austin

Tiffany Clem

Emily Garst

Laura Jones

Rane Oganowski

Caleb Wesen

Natalie Zimmerman

Electricians

Shannon Elliott

Paul Epton

Andy Kedl

Jon Kirchofer

Karin Olson

Jacquelin Stauder

Stitchers

Samantha Fromm Haddow

Jodi Karjala

Abbie Kenyon

Tina Robinson

Holly Walter

Light Board Operators

H. Goodson

Kurt Jung

Sound Run Crew (A2)

Lucas Martin

Riley Rosalie

Julie Zumsteg

Stagehands

Dante Benjegerdes

Madeleine Brown

Matt Flaherty-Joyce

Simon Luckow

Dominic Minor

Trevor Nelson

Chloe Volna-Rich

Brianna Williams

AS OF APRIL 8, 2026

*Senior Management Team



OUR MISSION

The Guthrie Theater engages exceptional theater artists in the exploration of both classic and contemporary plays connecting the community we serve to one another and to the world. Through its extraordinary artists, staff and facility, the Guthrie is committed to the people of Minnesota and, from its place rooted deeply in the Twin Cities, influences the field as a leading 21st-century arts organization.

OUR VISION

The Guthrie Theater creates transformative theater experiences that ignite the imagination, stir the heart, open the mind and build community through the illumination of our common humanity.

OUR CORE VALUES

Artistic Excellence

Community

Diversity, Equity, Inclusion
and Accessibility

Fiscal Responsibility

ACKNOWLEDGMENTS

Many volunteers give their time and talents in support of the Guthrie's activities. Apply at guthrietheater.org.

The Guthrie is a member of the League of Resident Theatres.

The Guthrie is a member of the American Arts Alliance and Minnesota Citizens for the Arts, government advocacy groups at the federal and state levels, respectively.



The actors and stage managers employed in this production are members of Actors' Equity Association, the Union of Professional Actors and Stage Managers in the U.S.



Directors and choreographers are members of the Stage Directors and Choreographers Society, a national theatrical labor union.



The scenic, costume, lighting, sound and projection designers in LORT theaters are represented by United Scenic Artists, Local USA 829 of the International Alliance of Theatrical Stage Employees.

Guthrie scenic artists are also represented by United Scenic Artists, Local USA 829.



Guthrie costume and wardrobe employees, stagehands and craftspersons are represented by IATSE Local 13.

All scenery, props and costumes are designed specifically for Guthrie productions and built in the theater's shops.



TAKE THE FOOD LESS TRAVELED.

FROM MN FARMS
FARMERS
KITCHEN + BAR
MPLS MN

Clean ingredients, grown by farmers just down the road.
Right across the street from the Guthrie Theater at 750 South 2nd Street.

**THEATER
LATTÉ
DA**

THEATER MUSICALLY

JUN 3 - JUL 12

Adapted from Willa Cather's classic novel, *MY ANTONIA* celebrates the contributions of immigrants to the nation's identity and spirit—a powerful work inviting us to consider how we remember our past, and whose stories we choose to tell.



LatteDa.org
612.339.3003

WORLD PREMIERE
MY ANTONIA

COULD THIS BE MY COUNTRY? COULD YOU BE MY HOME?

Conceived by Jessie Austrian, Noah Brody, Kate Kilbane, and Dan Moses
Music & Lyrics by The Kilbanes | Book by Noah Brody

Directed by Jessie Austrian | Music Direction by Jason Hansen



Ameriprise Financial is **proud to support** Louisa May Alcott's Little Women at the Guthrie Theater

For over 130 years, Ameriprise Financial has been helping clients plan for a confident future. This also extends into the communities in which we live and work. Through volunteerism, grants and individual giving, we create inspired moments in our communities to help people thrive.